

# The Purbeck Gazette



January 2021  
Issue no. 252

20,000 Copies:  
Swanage to Dorchester,  
Lulworth to Bere Regis

*You can also read online or download the entire magazine in book format at:*  
[www.purbeckgazette.co.uk](http://www.purbeckgazette.co.uk)



**Purbeck's Pioneer Of Vaccination Pg 20-21**



**A Career In Horticulture Calling? Pg 32**



**Perfect Purbeck Pickle! Pg 28**



**A Swange Legend Departs. Pg 14**

## PURBECK WHOLEFOODS



Find us at Wareham Market on Saturdays  
**FREE local home delivery**

37 North Street, Wareham. BH20 4AD.

Tel 01929 552332



**THE SILENT WOMAN**  
PUB & DINING | WAREHAM, DORSET

**WE'RE GOOD TO GO**

**YOUR LOCAL PUB IS BACK OPEN**  
NEW OWNERS · NEW MENU · ALL WELCOME  
[THESILENTWOMAN.CO.UK](http://thesilentwoman.co.uk) | 01929 552909

**SWANAGE TYRES**  
**NOW TESTING CLASS 4 & CLASS 7 VEHICLES!**

6 Victoria Avenue Industrial Estate, Swanage  
**01929 421398**

**Gasways Heating**  
Plumbing and Heating Specialists  
**Domestic & Commercial**

01929 427713 / 07889 409584

Proud members of  
**Checkatrade.com**  
Where reputation matters

**Gasways Heating**  
187204



## Editor's note...



**W**elcome to the January 2021 edition of your Purbeck Gazette!

Happy New Year to all of our wonderful readers! 2020 was certainly a year many of us won't forget in a hurry. Not only have we all suffered the effects of a global pandemic, on a local level, we had to deal with the devastating forest fire at Wareham, accidents at local beauty spots, such as Durdle Door and so much more. Our emergency service personnel could certainly do with a slightly calmer year in 2021!

At the time of writing, the Covid-19 vaccine has just started to be administered, so we are all hopeful that this may go some way towards getting 'back to normal' as much as is possible. On that note, acclaimed historian and author, Ilay Cooper, has penned a wonderful article for us this month on Benjamin Jesty, one time resident of Dunshay Manor in Harman's Cross. Jesty was a unassuming pioneer in the field of inoculations - super relevant to the world we're currently living in! Thanks so very much to Ilay for taking the time to share his knowledge with us all.

I've banged on about supporting local businesses over the past few editions, so I'd just add this gentle reminder that people's livelihoods are entirely dependent upon your support. No more empty shops please - just spend your money as locally as possible!

I hope you have all had some form of break over the festive period. The Gazette team wish all of our wonderful advertisers and readers the very, very best for the upcoming year. Let's all keep our fingers crossed that life is able to resume again and that local events are able to be held once more - we miss you all!

**The Purbeck Gazette is delivered by:**



**We distribute 20,000 copies of the Purbeck Gazette every month to properties in Purbeck utilising Logiforce GPS-tracked delivery teams.**

(Residents in blocks of flats, or who live up long driveways or in lesser populated areas will not get a door-to-door delivery. You will not receive a copy if you display a 'no junk mail' sticker on your letterbox)  
Purbeck has a population of approx. 45,300, we print & distribute 20,000 copies for Purbeck and further afield (Crossways, Broadmayne, Bloxworth etc).

You will not therefore ALL get a paper copy! 1 in 3 properties get a copy. We ensure a good spread of distribution throughout the whole area to get the best response for our advertisers, who are our business customers.

**We publish in-full online for those households who do not receive a paper copy through the door.**  
**See: [www.purbeckgazette.com](http://www.purbeckgazette.com)**

The **February 2021** edition has a **deadline** of 9th Jan.

The **March 2021** edition has a **deadline** of 9th Feb.

## Public Notices & Information



Compiled for the Purbeck Gazette by  
National Coastwatch Institution, Swanage



### Solar & Tidal Predictions - Jan '21

#### Peveril Ledge, Swanage

Date	HW	LW	HW	LW	HW	Moon / Tides	Sunrise	Sunset
01-Jan		04:41	09:57	17:02	22:18		08:09	16:13
02-Jan		05:19	10:34	17:41	22:57		08:08	16:14
03-Jan		06:01	11:14	18:22	23:41		08:08	16:15
04-Jan		06:44	12:00	19:07			08:08	16:17
05-Jan	00:30	07:34	12:53	19:59			08:08	16:18
06-Jan	01:26	08:33	13:56	21:02			08:07	16:19
07-Jan	02:30	09:46	15:12	22:21			08:07	16:20
08-Jan	03:44	11:05	16:33	23:33			08:07	16:22
09-Jan	04:59	12:10	17:31				08:06	16:23
10-Jan		00:34	06:05	13:08	18:42		08:06	16:24
11-Jan		01:30	07:06	14:01	19:37		08:05	16:26
12-Jan		02:23	08:01	14:51	20:27		08:04	16:27
13-Jan		03:13	08:51	15:39	21:12	NM	08:04	16:28
14-Jan		04:00	09:35	16:24	21:53		08:03	16:30
15-Jan		04:45	10:17	17:08	22:34	SP	08:02	16:31
16-Jan		05:28	10:57	17:49	23:15		08:01	16:33
17-Jan		06:10	11:37	18:29	23:55		08:00	16:34
18-Jan		06:51	12:19	19:08			07:59	16:36
19-Jan	00:35	07:31	13:01	19:48			07:58	16:38
20-Jan	01:17	08:15	13:49	20:32			07:57	16:39
21-Jan	02:04	09:09	14:47	21:31			07:56	16:41
22-Jan	03:03	10:23	15:53	22:46		NP	07:55	16:43
23-Jan	04:12	11:33	17:00	23:50			07:54	16:44
24-Jan	05:19	12:30	18:01				07:53	16:46
25-Jan		00:46	06:16	13:20	18:52		07:52	16:48
26-Jan		01:37	07:05	14:06	19:35		07:51	16:49
27-Jan		02:24	07:48	14:49	20:14		07:49	16:51
28-Jan		03:08	08:28	15:31	20:52	FM	07:48	16:53
29-Jan		03:49	09:07	16:11	21:29		07:47	16:54
30-Jan		04:30	09:46	16:51	22:06	SP	07:45	16:56
31-Jan		05:09	10:23	17:29	22:46		07:44	16:58

NM = New Moon + FM = Full Moon + NP = Neap tides + SP = Spring Tides

All times are local

eloe

### Swanage Town Council Meetings - January 2021

ALL 'IN-PERSON' MEETINGS PREVIOUSLY OPEN TO THE PUBLIC ARE SUSPENDED DUE TO COVID RESTRICTIONS - PLEASE CONTACT THE COUNCIL DIRECTLY FOR INFORMATION

### Wareham Town Council Meetings - January 2021

ALL 'IN-PERSON' MEETINGS PREVIOUSLY OPEN TO THE PUBLIC ARE SUSPENDED DUE TO COVID RESTRICTIONS - PLEASE CONTACT THE COUNCIL DIRECTLY FOR INFORMATION

### Dorset Council

For details of council meetings, councillors and decisions please use the web address: [www.dorsetcouncil.gov.uk/committees](http://www.dorsetcouncil.gov.uk/committees)

Alternatively, if you use the old 'Dorsetforyou' address:

[www.dorsetforyou.gov.uk/committees](http://www.dorsetforyou.gov.uk/committees) - you will be redirected to the same link called 'committee meetings and papers'.

### About Purbeck Media Ltd

*The Purbeck Gazette prints 20,000 copies every month and delivers throughout the region from Swanage to Dorchester, Lulworth to Bere Regis. The Purbeck Gazette is published by Purbeck Media Ltd. All editing, graphic design and lay-up is completed in-house by Purbeck Media Ltd. The Purbeck Gazette is printed by Blackmore Ltd of Shaftesbury and delivered by Logiforce GPS-tracked distribution. The Purbeck Gazette website is managed and edited on-site by Purbeck Media Ltd. Purbeck Media Ltd also publishes The Purbeck Guidette, the Purbeck Visitor Guide. All rights reserved.*

**OUR TEAM:** The Gazette team consists of: Nico Johnson, Editor, Kay Jenkins, Sales & Accounts Executive, David Hollister, Columnist, John Garner, Columnist, Regula Wright, Columnist. Purbeck Designs (some graphics), Kim Steeden, Spotlight Diary Editor.

**VOLUNTEERS:** A massive thanks to our volunteers, whose help is invaluable each month. Our proof readers are the very professional: Gerry Norris and David Holman, with volunteer Photographer, Tim Crabb, also on-hand.

### Telephone Sales & Client Contact

We reserve the right to maintain contact with our advertising clients, past and present, through the use of telephone calls and emails. We retain customer's names, addresses, emails and telephone numbers on file. If you do not wish to hear from us to be reminded of upcoming deadlines, please do let us know!



*Sunrise at the River Frome, by Richard Murgatroyd*

## Contents

<b>ARTS &amp; ENTERTAINMENT</b>	<b>34</b>
<b>BUSINESS MATTERS</b>	<b>34</b>
<b>COMMUNITY MATTERS</b>	<b>6</b>
<b>COUNCIL MEETINGS</b>	<b>2</b>
<b>FEATURES</b>	
A Year In Lockdown; Artwork by Mary Clutterbuck	35
Benjamin Jesty - The Modest Vaccinator	20-21
Blast From The Past	38
Can You Become A Foster Carer?	8
Gaia's Guide - The Guide For Missing People	16
Gazette Gardening	32
John Garner writes - Climate Change Of Mind	29
National Coastwatch	22
Swanage Pays Tribute To Julie Wheeldon	14
Telling It Like It Is - David Hollister writes	6
Trevor Chadwich Memorial Trust Update	10
VIP Bulk Stockists Of YOUR Purbeck Gazette!	5
<b>FOOD - Godlingston Manor Kitchen Gardens</b>	<b>28</b>
<b>HEALTH &amp; BEAUTY</b>	<b>36</b>
<b>LETTERS</b>	<b>4</b>
<b>MOTORING</b>	<b>27</b>
<b>NATURAL MATTERS</b>	<b>29</b>
<b>TRADE ADVERTS</b>	<b>41</b>
<b>DIARY SPOTLIGHT</b>	<b>39</b>

## CONTACT US

17b Commercial Road  
Swanage, Dorset BH19 1DF  
[www.purbeckgazette.co.uk](http://www.purbeckgazette.co.uk)

**THE OFFICE IS NOT OPEN  
TO GENERAL PUBLIC.  
ADVERTISERS ONLY PLEASE!**

### Editorial Enquiries:

Editor, Nico Johnson  
01929 424239

[ed@purbeckgazette.co.uk](mailto:ed@purbeckgazette.co.uk)

### Advertising Sales:

at: [www.purbeckgazette.co.uk](http://www.purbeckgazette.co.uk)  
Kay Jenkins 01929 424239 ext.1

## TO ADVERTISE

See our website shop at:  
[www.purbeckgazette.co.uk](http://www.purbeckgazette.co.uk)  
for rate card, booking & payment  
Prices from £25.80 (inc VAT)  
Discounts available

### The legal stuff...

Every effort is made to ensure the accuracy of information contained in this magazine, but the Editor is unable to accept responsibility for any omissions or errors that may occur.

The inclusion of any article or advertisement does not constitute any form of accreditation or approval by the Editor.

**No part, written or visual,  
of this publication may be  
reproduced without written  
permission of the Editor.**

**DEADLINE FOR FEBRUARY IS 12 NOON, 11th JANUARY**



# Your Letters

The clue is in the heading above - these are our readers' letters. They are NOT articles, they are letters. By you. Our readers. They are not our letters, they are yours - your letters. Simple!

Please send all letters to [ed@purbeckgazette.co.uk](mailto:ed@purbeckgazette.co.uk) with 'letter to the editor' in the email subject line. Please do not exceed 350 words. If handwritten, please ensure it is short and legible.

**PLEASE DO NOT DUPLICATE LETTERS TO OTHER PUBLICATIONS - WE DO NOT PRINT MULTI-PUBLICATION LETTERS.**

**FEBRUARY edition deadline: noon, 11th JAN**

## Negating Own Argument

Dear editor,

I always enjoy your magazine, especially the people sacrificing their credibility in order to be published. Normally, Mr 'shop locally, I'm off to Zante,' Hollister takes the plaudits. However, in the December issue, he has some serious competition.

Mr Beusher (Letters, Dec edition) completely negates his own argument by asserting that 'steam trains kill people with the amount of Nitrogen and Carbon Dioxide emitted into the air.' In reality, far from killing people, Nitrogen is 78% of the air that we breathe, and CO<sub>2</sub> is essential to all life on Earth.

Your columnist, Mr Garner comes across as very confused, he suggests that 'climate change deniers' believe that that climate changes simultaneously with it not changing. What has he been smoking to come up with that?

According to real scientists doing real science, ice core analysis shows long periods in history that have been cooler than now (ice ages), and warmer than now (when dinosaurs roamed the Earth). If the warming continues at the same rate as now (1.2C per century approx) for the next 80-100 years, we would be about as warm as it was in Roman times.

Yours sincerely, J. P. Searl, by email.

## Are You Serious??

Dear Editor,

**Swanage Railway - letters, Dec edition.**

I was most alarmed at the headline of 'An Environmental Disaster' in the Purbeck Gazette. What could this be? An oil spillage, plutonium in our water. Oh no - far worse - it's the Heritage Railway. Is this gentleman serious? The railway attracts visitors and enthusiasts alike and provides a wonderful trip down nostalgia lane.

I'm not a scientist but I'm sure there are more pollutants from a set of oil paints and crayons than the heritage railway, but wait, there's more - in a eureka moment this gentleman wants to rip up the tracks and put down tarmac and create a cycle path that will be free to use.

How wonderful - I presume all nerds and those with nothing better to do will be excluded. But I am remiss - clearly Mr Buescher will be paying for this project to produce another cycle path that no one uses. How philanthropic of him.

Rebecca Mace, by email.

## Exaggerations & Inaccuracies

Dear Editor,

I imagine that you will receive many replies to Mr Beusher's letter (December Gazette) about railways in general and the Swanage Railway in particular, but as it contains so many misunderstandings, exaggerations and inaccuracies I feel compelled to respond to it.

Mr Beusher appears to have such an aversion to railways that I can only wonder if he had some unfortunate interaction with them at an early age. Whatever the cause, here are some facts which may help to reassure him:

It is universally accepted that rail is the most economic and environmentally friendly means of transporting both people and freight on land.

Trains are not 'hugely destructive on the environment' - modern electric trains, powered by renewable electricity, are clean and have very low emissions. Hydrogen-powered trains, which will be even cleaner, are

# The RED LION

*Beer, Ale & Cider Specialists*

*Food served 12 noon - 3pm, 6pm - 9pm*

*High Street, Swanage. 01929 423533*

already being trialled. Rail travel (in the UK) has only become 'eye wateringly expensive' since the railways were privatised and began to be run for profit (often with tax-payer subsidies!) rather than as a public good.

Heritage railways are very aware of environmental issues surrounding steam and diesel trains, but their total contribution to pollution and global warming is simply minimal in absolute terms (and might be compared to, say, Formula 1 racing, with all the emissions associated with motor racing and related travel to and from Grand Prix events). The Swanage Railway's emissions might also be compared favourably with those of the estimated 40,000 cars taken off Purbeck's roads by it each year.

Mr Beusher asks: 'Why does Purbeck continue to support this outmoded form of transport?' Could it be that - apart from giving a lot of pleasure to a lot of people - it contributes an estimated £15million to the local economy each year?

He also suggests that steam engines should be 'stuffed and mounted' and only displayed in museums, but he seems not to appreciate that the Swanage Railway (like other heritage railways) is indeed a living museum, where the exhibits can be seen within a working railway environment.

The journey between Swanage and Norden takes about twenty-five minutes, not 'less than ten' as Mr Beusher claims, and offers plenty of time to admire to Purbeck countryside, with great views of Corfe Castle in particular.

Mr Beusher suggests the railway is run for the benefit of 'a few steam train diehards and train spotting nerds' but I can assure him that such people form a very small proportion of the over 200,000 passengers the railway carries in a (typical) year. Most are just tourists and families enjoying a great day out.

Far from being 'an exceptional piece of railway history', Harman's Cross station never even existed before the Swanage Railway built it in the late 1980s!

Finally, Mr Beusher's idea for a dedicated cycle track between Swanage and Wareham is a good one, but far from being free it would need to charge handsome fees to even begin to compensate for the loss of the £15m contributed to our local economy by the Swanage Railway!

Sincerely, David Collins, Wareham.

## One Way System Abandoned

Dear Editor

In 1995, whilst living in Essex, I wrote a book on the history of Sawbridgeworth airfield in Hertfordshire, and the squadrons which operated from there.

One squadron, 2(AC), suffered terrible low-level losses during its photographic sorties over Europe, particularly the loss of three of its North American Mustangs that crashed in low cloud/fog into hills north of Smedmore House, Kimmeridge whilst outbound to France on 26 May 1943.

The pilots, Flying Officers David Hirst and Norman John Miller, and Pilot Officer John Barton McLeod, were all in their 20s and died in the crashes that happened just seconds apart.

Now living in Dorset I have found all the details relating to the incident except the exact crash locations, and would ask the readership if there are any elderly or knowledgeable Purbeck residents who may have information that would help me find the crash site locations.

Yours sincerely, Paul Doyle, Aviation researcher and writer, private pilot

**FEBRUARY EDITION  
DEADLINE  
NOON, Mon 11th January**





## Square & Compass

Worth Matravers  
www.squareandcompasspub.co.uk 01929 439229

**WE'RE DELIVERING AGAIN!**

**Call to place your order!**  
Poly containers are being delivered to  
our wonderful customers again!

We hope to reopen in January 2021!  
Support your local, independent  
establishments - long may we remain!

## Happy New Trade Deal!

Britain's New Buddies! (Post-Brexit)

Thank goodness we've left the EU  
Who wants to be friendly with Spain?  
With Frenchies, Italians and Germans?  
They're all far too rational and sane.

No, the friends we'll need now are all crazy  
Like Putin with poisons to send you  
Like the bloke that looks queer who rules North Korea  
Or the Chinese with bats on the menu!

They will all be our new trading partners  
And bring dodgy cash to our land  
The Arabs as well might be useful  
If we need some misogyny ... or sand!

We Brits will have fun with some Fascists  
Who rule by the code 'Might is Right'  
We'll scrap every freedom and round up our foes  
To be sent to the bleak Isle of Wight!

Lastly we'll all sign a treaty  
So the mighty may do as they please  
So that most of the gang can stand sturdy and strong  
While we can stand strong ... on our knees!!

All the best for 2020 and Happy New Trade Deal!!

Martin Hobdell, Swanage, by email

## Open Garden Raises £1000

Dear Editor,

In reference your previous letters correspondent who wrote about about  
motorcycles parking where they do.

I was on the beach with a friend in September at the new Swanage end,  
when a group of motorcyclists parked in the bay for motorcycles.

Later, the Traffic Warden came along and put a ticket on every bike.

I would like to know:

- 1 - How do you stick a ticket on a bike without any sticky?
- 2 - Where are you going to put it?
- 3 - What is to stop anybody taking it?
- 4 - Who is going to pay for any damage to the paintwork?
- 5 - Can you imagine if you had tickets stuck to your car bonnet?

Also, they were not all local.

Welcome to Swanage.

Mrs R Hutton, by hand

A personal book-keeping service  
tailored to your needs

**Phone now**  
01929 425660  
07974 971919

Email: peter.seale@talk21.com

**Peter D. Seale**

**ACCOUNTANCY SERVICES**  
**BOOK-KEEPING**  
**TAX RETURNS**

## VIP stockists of YOUR Purbeck Gazette!

**Lytchett & Upton Council, Lytchett Minster**  
**The Courtyard Craft Centre, Lytchett Minster**  
**The Baker's Arm Pub, Dorchester Road**  
**The Clay Pipe Inn, Organford Rd**  
**Crossways Post Office, Crossways**  
**The Spar Shop, Puddletown**  
**The Post Office, Winfrith**  
**Mace Stores, Bere Regis**  
**Bartletts Store, Bere Regis**  
**Holme Nurseries, East Holme**  
**Co-op Food & Petrol Station, Sandford**  
**Horseys Newsagents, Wareham**  
**Premier Stores, Carey, Wareham**  
**Sainsbury's Supermarket, Wareham**  
**Purbeck Mobility, Wareham**  
**The Hidden Deli, Wool**  
**Gillett's Spar Shop, Wool**  
**The Lookout Stores, Stoborough**  
**Stoborough Garage, Stoborough**  
**Foleys Garage, Harmans Cross**  
**St Michael's Garage, Harmans Cross**  
**Swanage Tourist Information Centre**  
**Swanage News Newsagents, Swanage**  
**MColls Newsagents, Swanage**  
**Jenkins Newsagents, Swanage**  
**Arkwrights Stores, Swanage**  
**Ballard Stores, North Swanage**  
**Costcutters, Herston, Swanage**  
**Richardson's Budgens, Swanage**  
**Triangle Garage, Swanage**  
**Durlston Castle/Seventhwave Restaurant, Durlston, Swanage**  
**The Scott Arms pub, Kingston**  
**Corfe Castle Village Stores, Corfe Castle**  
**Langton Village Stores & Post Office, Langton**  
**Studland Stores, Studland**



**THANK YOU TO OUR AMAZING STOCKISTS - SUPPORT LOCAL!**

## HEIRLOOMS

JEWELLERS & SILVERSMITHS

Expertly curated  
antique, pre-owned and  
modern jewellery

**Tues-Fri**

9.30am - 5pm

**Saturday**

9.30am - 2pm



Shop  
online with  
us too

Jewellery and silver repairs  
Watch and clock repairs and servicing  
Watch batteries and straps  
Professional valuations

Engraving

We buy gold, jewellery, silver and watches



21 South Street, Wareham, BH20 4LR  
01929 554207 . www.heirloomsjewellery.co.uk



# Community Matters

## TELLING IT LIKE IT IS...

### Thanks Mr Lincoln, Enjoy The Play...

by David Hollister

I have been privileged to have been given the opportunity to write this column for the last ten years, during which time I have learned the truth of Abraham Lincoln's statement that 'you can please some of the people all the time, and all of the people some of the time, but you cannot please all of the people all of the time'.

Nobody, especially me as a columnist, is exempt from criticism but I think I take issue with the reader who criticised my trip to Zante; a holiday which had been booked several months prior to the Covid-19 outbreak, and which I would have eschewed willingly, had the government advice on the day of leaving not been that it was safe to go there. As it was, we naturally quarantined for two weeks upon our return as by that time we were required to do!

I had to smile when I read another criticism: 'I usually skip his page' but then went on to allow my views to 'spoil his day'. A similar view to the people who say: 'The X-Factor is rubbish, I never watch it'. So how do you know it's rubbish if you don't watch it? My sincere advice to anyone who is easily offended by what I write is simply this – if it upsets you, then don't read it! There are other pages in this excellent magazine which I don't write!

Anyway. To business. I've gathered together some of the main issues that have caused us concern this year and written on each specific point to our County Councillor for South East Purbeck, Cherry Brooks, who is also the Cabinet Lead Member for Highways supporting the portfolio holder for highways, travel and environment, Cllr. Peter Wharf. My letter read: I need to draw a number of different items to your attention and request that you pass these to Cllr. Wharf if you feel that to be the correct course of action, or alternatively, reply yourself and advise me of the actions you propose to take. I have put each item on a separate addenda to this letter for clarification.

- Dangerous Footway in Harmans Cross
- Recurring puddle at the foot of St. Michaels Hill (Swanage side of the Railway line) on the main A351
- Continuing water problem at Bank Hill in Worth Matravers
- Continued absence of a proper footway over the railway bridge in Wareham
- Unacceptable road junction at the foot of Langton Hill where it meets the A351.

Each addenda closed with my saying: "Cllr Brooks: Is this problem your responsibility? If not, whose? To which of your colleagues should I write to achieve an acceptable solution? Should I write to that person or will you kindly pass this section of my letter to them?"

I am pleased to report that I received a prompt reply to this letter: "I have passed this through to our officers to reply to you", although Cllr Brooks seems to have gained the impression that just because I had mentioned that these queries had been brought up by readers, I was seeking a 'press release'. Nothing could be further from the truth. What I am seeking is simple acknowledgement that these problems remain unresolved and confirmation of who was going to deal with them and when that was likely to be.

I am grateful to Cllr. Brooks for her reply and look forward to being able to report to our readers next month of the progress that is being made on each point. I do treat this as a positive and meaningful response. Watch this space.

What a pleasure to see Sustainable Swanage working alongside Dorset Council with their new planting project, putting containerised oak trees on the High Street between the Emanuel Church and the Swanage School. These – when fully grown – will provide a beautiful avenue for the entrance to our town. You can help by registering by email with: Sarah. Spurling@Dorsetcouncil.gov.uk and offering a donation; no sponsorship offer is too small.

What a pleasure also to see Swanage Council working on rebuilding the damaged wall up Seymer Road, and planting trees to replace the ones that had to come down. The roots were gradually pushing the wall into

the road and it was only a matter of time before there was an accident.

Congratulations to the local artists and craftspeople who organised the 'Art4Action' auction in early December. At the time of writing I'm not aware of how much they raised, but looking at the online catalogue, I would imagine that they will beat the £9000 they raised in a similar auction in June.

What a pleasure to see our little local community radio station, Purbeck Coast, also going from strength to strength. We will never be Radio 2. Or even Wave 105. But that's not what we set out to be. Our volunteer presenters all work from home as the studio is still 'locked down' and likely to remain so. Many of us are local, with local news and stories to tell, many items by courtesy of the online Purbeck Gazette. Working in conjunction with each other! Volunteers are not paid, not because they are worthless, but because they are priceless.

The spirit of Abraham Lincoln lives on in my 'Home Alone' show every weekday afternoon on 101.2 FM and online at [www.purbeckcoast.com](http://www.purbeckcoast.com) I just hope you enjoy what you hear; if you do, then tell your friends. If you don't, then tell me!

By the time you read this it will probably be New Year. A New Year's Eve unlike any we have had for decades; no parties, no music in the streets, no London Fireworks, no huge concert on the London Eye. Just 'hands, face and space' which we all have to work with – like it or not – to stop the spread of Covid-19.

We are not going out, we're staying up by the fireside on New Year's Eve, along with a bottle of good wine and the DVD of the Bryan Adams London Eye Concert .... Or the Take That London Eye concert ..... synchronised through my sound system. Staying up not to see the New Year in, but to make sure that the old one actually leaves.....

Let us hope that there is an outbreak of sensible behaviour amongst the university students who chose to respect the November lockdown by holding large unmasked and undistanced parties in cities where the R number was well in excess of 1.

In view of the fact that we all locked down – not once but twice – and the pubs were and are closed and that many businesses were ruined just so they could go back to Uni and the kids go back to school, I think that 'disappointed' is too mild a word.

Anyway, thank you for reading my columns in 2020 and for responding in so many different ways. I'm glad to have provided my readers with food for thought!






**Do you need some help ?**  
**Our Volunteers are Ready & Willing**  
**They can do all sorts of things for example:-**  
**Help with Shopping**  
**Change Light Bulbs - Move some Furniture**  
**Remove Rubbish - Walk the Dog**  
**Re-tune TV or help with Mobile Phone**  
**Small Repair Jobs**  
**Just give us a call!**  
**01929 424363**  
**Purbeck Good Neighbours**  
**All we ask is a minimum donation of £2.00**



**WPM Residential Lettings**

If you need to Let or want to Rent, contact WPM.  
We offer a personal service to Landlords & Tenants

15c Commercial Road, Swanage. 01929 426200  
Web: [www.wpmlettings.co.uk](http://www.wpmlettings.co.uk) Email: [wpmlettings@gmail.com](mailto:wpmlettings@gmail.com)

## Lexi-May Trust Receives £1000 From Greendale



Photo: Maria Seabright, Greendale's HR/Finance director, presents a cheque for £1000 to Carly Hopkin, founder of the Lexi-May Trust.

Chartered Builders, Greendale Construction Limited, donated £1000 to The Lexi-May Trust's Christmas event at Nutley Farm, Winfrith.

The 'Christmas Lights, Santa and Reindeer Experience' saw fifty families with children suffering terminal illness or life limiting conditions, invited to the farm where they could wander around a magical illuminated walk and visit two friendly reindeer who had come all the way from the North Pole! They even got to meet the big guy, Father Christmas himself, who made a special trip when he test-ran his sleigh ahead of Christmas Eve! All families were given an allotted time slot in order to adhere to social distancing rules.

The Lexi-May Trust was founded in 2016 by Carly and Michael Hopkin after the tragic death of their daughter from an inoperative brain tumour. The Trust supports children with terminal illness or life limiting conditions in Dorset.

Maria Seabright, HR/Finance director at Greendale Construction, commented: "It's been an incredibly tough year for everyone, but that doesn't mean charities should lose out. With that in mind, Greendale is delighted to be able to contribute towards making special memories for the families and their incredibly brave children, who were able to attend this magical event at Nutley Farm."

Carly Hopkin, Founder of The Lexi-May Trust, commented: "We are absolutely thrilled to have received such a generous donation from Greendale Construction."

"They've continued to support us throughout 2020, despite the current pandemic. We are very honoured they have supported our exclusive Nutley Farm experience this Christmas. This £1,000 donation will create so many special memories for our local families; we thank Greendale kindly for their continued support."

**FEBRUARY EDITION  
DEADLINE  
NOON, Mon 11th January**

**ASHLEY BLINDS**  
curtains • shutters • awnings  
*perfectly made to measure*

**WINTER SALE**

**UP TO 30% OFF**  
\*terms & conditions apply

**LOCAL FAMILY COMPANY  
ESTABLISHED 18 YEARS**  
**FREE** home appointment,  
expert survey and fitting  
**01929 498028**  
[www.AshleyBlindsUK.com](http://www.AshleyBlindsUK.com)

Est. 2002 by Martin & Vera

**REMOVALS**

**CLIVE R. CRABB**  
07974 383159  
[clivecrabb12@gmail.com](mailto:clivecrabb12@gmail.com)  
Waste Carrier License Holder

**HOUSE REMOVALS, HOUSE CLEARANCES,  
SHED/GARAGE CLEARANCES, 'MAN & VAN' SERVICES,  
COLLECTION/DELIVERY TO & FROM AUCTIONS  
GARDEN CLEARANCE & GRASS CUTTING  
FLAT PACK FURNITURE ASSEMBLY**

**Swanage & Purbeck Concierge Ltd**  
Specialists in home and lifestyle management

Do you find yourself  
wishing you had more  
hours in the day?

Rediscover your freedom  
by leaving your daily  
responsibilities to us.

Telephone: 07488 301008  
Email: [enquiries@swanageandpurbeckconcierge.com](mailto:enquiries@swanageandpurbeckconcierge.com)  
Website: [www.swanageandpurbeckconcierge.com](http://www.swanageandpurbeckconcierge.com)



**WAREHAM COBBLERS**  
**Shoe Repairs**  
**Key Cutting**  
 Leather Goods  
 Engraving  
 7 North Street, Wareham  
 01929 553355  
 OPEN: 8am - 1pm

**MATT HILLAN**  
 Building Alterations  
 & Maintenance  
 All Trade Aspects Undertaken  
 Free Estimates Fully Insured  
 01929 427296  
 07971 690817  
 Happy to help and advise

## Curtains by Clare

Have your curtains  
made for you  
at very reasonable rates

Also curtain repairs  
and alterations

Phone 01929 550714  
mobile 07969 695338

**RECORDS  
WANTED**  
**POP - ROCK**  
**REGGAE - SOUL**  
**PUNK - JAZZ**  
**Good condition only!**  
**07831 266478**  
 ROGERHUNTBDS@YAHOO.CO.UK

## Room For One More?! Can YOU Become A Foster Carer?

#FosteringPays



**Room for one more?**

**D**orset Council are joining forces with other local authorities across the south west region this Christmas to call for more people to consider becoming foster carers.

According to The Fostering Network, there are 6,140 children in care in the south west and 2,650 fostering households, with many more needed. Local authorities from Dorset, Bath and North East Somerset, Cornwall, Devon, Gloucestershire, North Somerset, Somerset, South

Gloucestershire, Swindon and Wiltshire have all come together to run the Christmas campaign. They are calling for those in the region with space in their home and their lives to consider fostering for their council.

Isla, a child living with a foster family in Dorset, said: "Christmas was different because it was a lot more fun. It was lovely to have a nice family like you guys."

Craig and his wife Kim are currently being assessed as foster carers in Wiltshire and said: "We're making plans about what we're going to do for Christmas and we just realize that actually we've got the space and the time to welcome someone else into our home."

Jo, a foster carer from North Somerset, said: "Being a foster care at Christmas is a really, really special time."

A foster carer in Swindon said: "I want every child to feel the magic of Christmas. It's always a magical time of year and being able to give vulnerable children the chance to feel the love and magic of Christmas makes it a whole lot more special for us."

Cllr Andrew Parry, Portfolio Holder for Children, Education, Skills and Early Help for Dorset Council: "There is a huge need to raise awareness of the need for more foster carers across our region. This festive campaign will help people to understand that when you foster for your local council you are part of a service that is not for profit and where every penny is spent on providing a good service to the children and their foster carers."

"We are so grateful to all our foster carers, not only at Christmas but all year round. They make a real difference to the lives of children in our county."

If you are interested in fostering, you need to be aged 21 or over and have a spare bedroom. Find out more by visiting [www.fosterindorset.co.uk](http://www.fosterindorset.co.uk) or call 01305 225568.

You can also follow the campaign at [www.facebook.com/FosterInDorset](https://www.facebook.com/FosterInDorset)

## Register With 'Help And Kindness' Today!

**Dorset's food banks, businesses and community groups urged to register with Help and Kindness**

**D**oes your business or community group play a role in the supply of food or medicine to people in Dorset? If the answer is yes, please register your organisation's details on the 'Help and Kindness' website to support local residents this winter.

The effort to boost registrations is part of the #DorsetTogether community response to Covid-19 and aims to tackle the social and economic impact of the pandemic.

All local businesses or groups that offer food, hot meals or other helpful services to the community, such as:

- Food banks
- Community fridges and 'social supermarkets'
- Farm shops and local village stores
- Pubs, restaurants and cafes
- Hot food delivery services or takeaways
- Pharmacies

are encouraged to complete the easy online form, accessible here: <https://www.helpandkindness.co.uk/add-a-listing-to-helpandkindness>

By registering you will be helping to make 'Help and Kindness' a single point of information where the public and professionals can find help for themselves or someone in need.

Cllr Laura Miller, Dorset Council Portfolio Holder for Adult Social Care

and Health said: "Access to food and local support services is a key issue this winter and we want to make it easy as possible for people to find out where they can turn to if they need help."

"Some people may be in financial difficulties and need to find out where their nearest foodbank is. For others it might be that they are unwell and on their own and need to find out where they can order some hot food to be delivered."

Cllr Jill Haynes, Dorset Council Portfolio holder for Customer and Community Services said: "We know there's so much help and support out there, but it's not always easy to find. The Help and Kindness database maps and lists all the support from across the voluntary, public and private sectors so that people can find services that are available in their village or town."

"By registering your business on the Help and Kindness website you will be making it easier for people to find your service and helping to ensure no one goes without support this winter."

**Register your organisation now at: [www.helpandkindness.co.uk/add-a-listing-to-helpandkindness](https://www.helpandkindness.co.uk/add-a-listing-to-helpandkindness)**

**FEBRUARY 2021 DEADLINE**  
**NOON, Mon 11th January**



## Extra Covid-19 Testing Facility For Local Residents

A new Covid-19 Mobile Testing Unit opened in Purbeck on Tuesday 24 November. The new facility at Purbeck Park Car Park (formally known as Norden Park and Ride Car Park) will provide increased access to testing for residents in Purbeck who may find it hard to access existing testing sites.

The mobile testing unit will be in Wareham every Thursday (started on 26 November). Signage will also be in place to direct residents to the site. All tests must be booked in advance via the national portal.

When booking a Covid-19 test you will get a choice of sites, depending where they are located that day and their capacity. Sites are at:

- Bridport
- Dorchester
- Weymouth
- Hawkwood Road, Boscombe, Bournemouth
- Wallisdown, Bournemouth
- Lansdowne, Bournemouth
- Creekmoor, Poole

Sam Crowe, Director of Public Health for Dorset and Bournemouth, Christchurch and Poole Councils, said: "We welcome the new testing site at Purbeck Park which we hope will make getting coronavirus tests more accessible for our residents in the Purbeck area. Identifying and isolating cases quickly is critical to controlling the spread of Covid-19. We have been working with partners to identify the best places for new sites to ensure Dorset residents can access testing when they need it."

Cllr Laura Miller, Dorset Council's Portfolio Holder for Adult Social Care and Health said: "The new Covid-19 mobile testing unit will give the opportunity for residents who live in the more rural areas of our county to access testing. It is really important that as soon as you start developing symptoms of Covid-19, you book a test online or if you don't have access to the internet, you call 119 and book a test."

All sites have capacity to do Covid-19 tests. People should only book a test if they have Covid-19 symptoms: new continuous cough, high temperature, change or loss in sense of smell, change or loss in sense of taste. All tests must be book in advance through the national portal.



**JAMES SMITH**  
FUNERAL DIRECTORS

SERVICE

Broad shoulders. So you don't have to carry the weight alone.

TEL. 01929 422 445  
OFFICE@JAMESSMITHFUNERALS.CO.UK  
JAMESSMITHFUNERALS.CO.UK



over 100 years  
Douch Family  
Funeral Directors  
understanding • care • value • service

## INTERIOR AND EXTERIOR PAINTER AND DECORATOR

- All aspects of painting & decorating undertaken
- Domestic, new build & commercial
- Qualified with 30 years experience
- First class finish
- FREE written quotation
- Fully insured - NO VAT
- No job too big or small




CALL GAVIN ON:  
07977 047314 or 01929 471704  
Email: g.lewis515@btinternet.com

## LOCAL BUSINESS ACHIEVES NATIONAL RECOGNITION



Steve Wheller receiving the award on behalf of Carpets Select

*Carpets Select is a local company which employs skilled, local labour, and is a member of the Guild of Master Craftsmen.*

Membership was granted by the Guilds' Council of Management in recognition of both the company's commitment to working with skill and integrity and its agreement to abide by the Guild's publicly declared aims and objectives.

Carpets Select Director, Steve Wheller, says 'We are honoured to have received such high recognition from the Guild. We strive hard to deliver a personal, quality

service and all at Carpets Select pride themselves on their workmanship.' He went on to say 'It goes to show, that in these days of impersonal superstores, you can't beat personal, friendly, high quality service and workmanship from people who really care about their work.'

With their home selection service, Carpets Select can make choosing your floor covering a stress free experience. So, if you're in need of carpet, vinyl or laminate flooring, call Steve or John at Carpets Select 01929 460005 or email carpetsselect@tiscali.co.uk and they will be happy to help you.



- SIT BACK, relax, put your feet up and choose a carpet, vinyl or laminate flooring away from the crush of the high street ... You can with Carpets Select ... the carpet store that comes to your door!
- With over 45 years combined experience Steve Wheller and John Cropp are sure to meet all your flooring needs.
- As members of the Guild of Master Craftsmen Carpets Select pride themselves as being able to provide both quality workmanship and outstanding service, as well as extremely competitive prices.
- Call Steve or John the Master Craftsmen of the carpet world.

ALL MAJOR CREDIT CARDS ACCEPTED

**01929 460005**





# The Trevor Chadwick Memorial Trust Update

Nico Johnson writes....

Things are progressing well with local plans to raise an appropriate bronze statue to the quietly heroic Swanage man who arranged for the safe transportation of 669 children during WWII.

Trevor Chadwick, acclaimed as the 'Purbeck Schindler', was absolutely instrumental in saving the lives of at least 669 children and several adults. What started as a very small rescue mission to save two children who were sponsored by Forres School in Swanage (then run by Trevor's father and uncle) slowly unfolded into one of the most daring and large scale rescue missions undertaken in modern history.

Upon arrival in Prague to collect the sponsored boys, Trevor met Nicholas Winton, Martin Blake and Doreen Warriner. Having originally organised to go on a skiing trip, Martin and Nicholas's plans changed when they witnessed the terrible chaos of thousands of parents queuing for a place for their children on the Kindertransport trains in Prague. Trevor collected the two boys Forres School were sponsoring and took along another child, Gerda Mayer (who was sponsored by Trevor's mother and later went on to become a well known poet). After safely bringing the three children back to Swanage, Trevor immediately returned to Prague.

Nicholas Winton went to London and, with the help of a few more courageous souls, Nicholas and Trevor went to work to save as many children as they could from the Nazis. Nicholas worked on the London side - arranging permits and finding sponsors for children here in the UK, whilst Trevor remained on the ground in Prague, organising the trains and ensuring the children reached them and departed safely.

As time progressed and with the march of the German army into Czechoslovakia, Trevor's life was placed in ever greater peril as he had to deal with Nazi officials. The very real and significant risks he took in ensuring the safety of so many complete strangers are difficult to fully grasp today. Trevor successfully organised eight trains, personally waving off five of them. The ninth train, with 250 children aboard, was stopped and never departed for safety. Trevor returned to Swanage in 1939 when the situation became too dangerous to continue.

Nicholas Winton, widely acclaimed for saving so many children, once said: "Trevor did the more difficult and dangerous work after the Nazi invasion and deserves all the praise". Yet whilst others involved with this daring and historic rescue mission are honoured with bronze statues, plaques and accolades, Trevor quietly slipped into obscurity, his name rarely mentioned. Many of the descendants of those he personally saved from certain death were left ignorant as to who saved them. The man who organised the departures and personally waved so many of the children off at the station was somehow allowed to slip into the forgotten realms of history for decades.

Well - Trevor will **not** be forgotten. Swanage folk have long memories and are proud of their own, so now, over eighty years on, the newly-formed Trevor Chadwick Memorial Trust is ensuring that the actions of this unsung hero do not vanish into the mists of time.

Local sculptress, Moira Purver, has created a simply stunning and wholly appropriate statue of Trevor, showing him with a babe in arms and a child looking up at him. Moira has worked tirelessly to ensure the statue shows a true likeness of Trevor, by studying photographs and researching the man Trevor was. One of the Czech Kinder children, Inge Pendely, remembered him thus: "My memory is of a smiling man who put my very nervous mother at her ease. He made us laugh." (quote from a book written by Trevor's son, William, entitled: 'The Rescue of the Prague Refugees 1938/39').

There are so many unsung heroes in this world of ours, but it is a highly worthwhile effort to ensure that we do not forget our history and that we preserve the memory of the brave actions of a few who made an instrumental difference to many. Trevor is one of those few who truly deserve our long-term recognition - something he never sought for himself. It is down to us, each of us, to ensure his actions are not forgotten, least not by those who hail from Swanage for he was a man of Purbeck and Purbeckians have a duty ensure his actions are never forgotten.

The TCM Trust is requesting donations to enable them to cover the cost of the commemorative statue. They are reaching out to each and every one of you reading this - literally every single pound donated counts. It's been a hard year for all of us this year, but surely we could each give a pound? Just one pound? It seems entirely feasible and if all of you reading take the few minutes to make a donation, the £80,000 needed doesn't seem like such a mountain to climb, does it?

Let's all join together, as a community, to ensure Trevor and the lives he saved are never forgotten. He was one of us and always will be - so let's ensure the brave and selfless actions he took, which saved the lives of so many, are never forgotten. It's down to us - and I'm sure that together, anything is possible. Let's make it so!



Above: Updated (from our previous article) image - Moira Purver's stunning maquette of the final statue of Trevor Chadwick (which will be cast in bronze). The TCM Trust must raise £80,000 to cast the statue (life size). When completed, it is planned to erect the statue on Swanage's recreation ground, overlooking the sea and next to the children's play area, which is being renamed accordingly. A fitting tribute to one of Swanage's most unsung heroes.

## The Trevor Chadwick Memorial Trust

### TO DONATE:

**CHEQUES:** Please make your cheques payable to: 'Swanage and Purbeck Development Trust' and send to:

Caroline Finch, Treasurer, 12 Bon Accord Road, Swanage, Dorset. BH19 2DS.

**BY BACS:** Please make payments to:  
Account number: 27838460  
Sort Code: 30-99-13

Account name: Swanage & Purbeck Development Trust (Lloyds Bank).  
Use reference: Trevor Chadwick Trust

**CASH:** Please drop into the Town Hall (use the letterbox if closed).

For further information, see:  
[www.trevorchadwick.uk](http://www.trevorchadwick.uk)



# SWANAGE RAILWAY

Looking for a day out or some relaxed sightseeing after Christmas? If so, the Swanage Railway's Covid-19 safe steam train service is the perfect solution.

It operates daily between Norden, Corfe Castle and Swanage from Sunday, 27 December, 2020, until Saturday, 2 January, 2021.

With the requirement for pre-assigned and socially distanced seating, pre-booking for this service is advised via the Swanage Railway website, where the timetable can also be viewed.

An additional element of our safety programme requires face coverings to be worn on our stations and trains. Covid-19 restrictions meant that we could not run our traditional Santa Special trains this year.

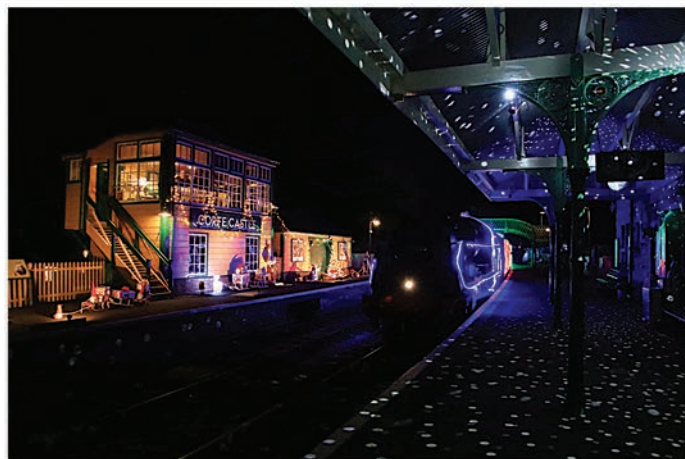
But, on selected dates in December, the Swanage Railway is running its new 'Steam and Lights' train services, with two brightly lit steam trains departing Swanage station on each day for the one-hour round trip to Norden. These are now sold out but they will be returning to Swanage Railway next year.

Such was the demand for 'Steam and Lights' train tickets that extra operating dates were introduced and those too are sold out.

The Swanage Railway would like to thank its passengers and supporters and wish them a very happy New Year.

For details of the Swanage Railway's train services, special events and products please visit [swanagerailway.co.uk](http://swanagerailway.co.uk).

The Swanage Railway is actively looking for new volunteers so, for a chat, please contact Swanage Railway volunteer co-ordinator Mike Whitwam on 01929 475212 or email [iwanttovolunteer@swanagerailway.co.uk](mailto:iwanttovolunteer@swanagerailway.co.uk).



The Christmas Light Train - Photos: Andrew P.M. Wright



## Out Of The Blue



Another year gone, and what a year it has been! January was named after god Janus, known as God of new beginnings. We certainly hope January 2021 does symbolise new beginnings and a fresh start, but whatever happens, rest assured we will stay committed to improving the

community by listening and acting upon what you have had to say. <https://www.surveymonkey.co.uk/r/PurbeckEmail>

So, what have we been up to? Well, during the period 06 November – 05 December 2020, we dealt with a total of 503 occurrences in Purbeck, of which 128 were recorded crimes and resulted in 35 arrests. There were also 77 occurrences of road traffic collisions.

Whilst on the subject of vehicles, we have seen a up-urge of e-scooters around our towns, many of them being used by the younger members of our community. It is currently against the law to ride a privately owned e-scooter in any public place. If officers find anyone using e-scooter in a public place, the scooter could be seized, and the rider reported for any offences.

### These include:

- Using a motor vehicle on a road or other public place without:
- Insurance – 6 points, £300 fine, seizure of vehicle
- Licence – penalty points, fine, seizure of vehicle
- Failing to comply with construction and use legislation – ranging from non-endorsable fixed penalty to being reported to court for using in a dangerous condition
- Impaired by alcohol/drugs – licence disqualification, fine or penalty points

On a happier note, we were able to assist two rough sleepers who had taken up residence in the blue shelter next to the Mowlem Theatre in Swanage. Officers were able to signpost them to the local authorities where they received appropriate support.



## Partners And Communities Together

Finally, if you need to contact Dorset Police, please call our Police Enquiry Centre by calling 101 or email [101@dorset.pnn.police.uk](mailto:101@dorset.pnn.police.uk). Always call 999 in an EMERGENCY when there is a risk of HARM or a CRIME in progress. Alternatively, call the free CRIMESTOPPERS line on 0800 555 111. You can also use our website to report a number of issues, from full crime reports to lost property; just use the following link <https://www.dorset.police.uk/do-it-online/>

Don't forget to visit us on our Facebook page [Facebook.com/Purbeck-police](https://www.facebook.com/Purbeck-police) and Twitter - @PurbeckPolice – we really value your support and comments. You can also see our latest priorities and up and coming events at <https://www.dorset.police.uk/neighbourhood-policing/purbeck/>

Why not register on Dorset Alert, by registering for the free Dorset Police community messaging alerts you will receive information on: local crime and incidents where we believe that sharing information with you will help to prevent further offences occurring, crimes and incidents where you may be able to help by providing vital information, current crime trends, crime prevention advice and safer neighbourhood activity and opportunities to meet the team.

You can also receive news from our partner agencies such as Dorset Fire and Rescue Service or Trading Standards and Community safety messages.

**Purbeck Neighbourhood Policing Team**

## Arrests Made In Connection With Vehicle Crime In Purbeck

**A**rrests made in connection with series of reported vehicle crime offences in Purbeck - officers investigating a suspected vehicle crime series in Purbeck have arrested four people.

Between Thursday 12 November and Tuesday 24 November 2020, at least twelve offences - including theft from vehicles, theft of vehicles and attempted theft - were reported to have occurred in Purbeck, including in the Wareham and Wool area. On a number of occasions it was reported tools were taken from the vehicles.

A bank card was also reportedly stolen on one occasion and is alleged to have then been used fraudulently. Following investigations by local officers, arrest enquiries were carried out on Friday 4 December 2020.

A 19-year-old woman from Wool and a 31-year-old man from Poole were arrested on suspicion of theft and fraud by false representation. A 22-year-old man from Poole and a 24-year-old woman from Wool have also been arrested on suspicion of theft. All four have been released under investigation while officers continue to make enquiries.

Neighbourhood Inspector James Offer, of Purbeck police, said: "We take reports of this nature seriously as we recognise the impact these matters can have on victims. "We have been making a number of enquiries and took proactive action to arrest four individuals in connection with these reported incidents.

"I would urge vehicle owners to ensure their cars are left secure at all times and that tools are removed from vehicles overnight."

**For more crime prevention advice visit [www.dorset.police.uk/help-advice-crime-prevention/home-property/vehicle-crime-removeitlockit/](http://www.dorset.police.uk/help-advice-crime-prevention/home-property/vehicle-crime-removeitlockit/)**

## Covid-19 Officers On Patrol

**Dedicated Covid-19 officers on patrol to keep our communities safe**

**D**edicated Covid-19 police patrols are now operating across Dorset in a bid to reassure our communities and maintain public safety during the pandemic.

Operation Tattoo will see a dedicated Covid-19 car operating across the Force, seven days a week, to deal with any Covid-19 related issues, provide support to partners and encourage the public to abide by Covid-19 restrictions and legislation. There will also be extended cover with another unit joining the patrol between 4pm and midnight every day and further support during the same time at weekends.

The units will have a specific remit to deal with Covid-19-related calls to encourage, educate and engage with the public - with enforcement action taken if Covid-19 restriction breaches take place.

Superintendent Heather Dixey said: "We want the communities of Dorset, Bournemouth, Christchurch and Poole to be reassured we are doing everything possible to provide visibility and deal with Covid-19-related calls being made to Dorset Police. The last week has seen 164 calls made to our Force Command Centre, an increase on the first week of Tier 4 national restrictions, and more than twenty Fixed Penalty Notices issued for breaches of legislation.

"Operation Tattoo units will continue with a 4Es approach to dealing with Covid-19 issues and we hope the public will respect advice they are given if they are in contravention of legislation which is there to protect them and our communities. However, subject to specific exemptions, it is illegal to gather in groups of more than two people or have gatherings of mixed households. If police receive reports of this and need to take enforcement action we can and will to prevent spread of the virus."

Operation Tattoo will also see police working closely with local authorities to support reports of businesses or licensed premises breaching legislation, and also working with local authority Covid-19 Marshalls.

Covid-19 Marshalls in Bournemouth, Christchurch and Poole will have a radio link to the Op Tattoo units via the CCTV control room in the area.

Superintendent Heather Dixey continued: "We know dealing with these national restrictions is difficult for our communities, but we must all comply with these rules and not step outside of the legislation. Our communities have largely been compliant throughout this year, but we must continue to do the right thing and not break the law - potentially putting many lives at risk.

**Operation Tattoo has been funded by the Government's Covid-19 Surge fund and is scheduled to continue until February 2021.**

## SELF STORAGE UNITS

**From 10ft x 6ft up to 15ft x 16ft**  
**For furniture, classic cars, documents**

**Insured & Alarmed**

**At East Stoke, Wareham**

**[www.purbeckselfstorage.co.uk](http://www.purbeckselfstorage.co.uk)**

**Call 07836 369969**

**You can get everything you want with your new carpet..**

**Great Offer**  
**80/20**  
**Wool Carpet**  
**From**  
**£18.99**  
**Sq mtr**



**FREE**  
**Estimates**

**Honest**  
**Advice**

Selected ranges, see in-store for details

**WE'LL BEAT ANY PRICE**

**Purbeck Furnishing**

**Tel: 01929 422703**

**61 Kings Road West, Swanage, BH19 1HQ**

**Prefer to shop at home?** If you have problems getting to us, we will come to you...Call us to arrange a **FREE** home visit!

**Need Help?** We will arrange to move furniture, take up your old flooring and remove all the rubbish. Just ask for details.

**Carpets : Vinyls : Karndean: Beds: Curtains: Recliners**

## @29 re-cycle

**29 Commercial Road, Swanage. BH19 1DF**

**We throw HUGE amounts of electrical items away every year.**

**At @29 re-cycle, we aim to STOP some of this waste!**

**We test and clean every electrical item and guarantee them for three months, and sell them at roughly 25% of the original price.**

Proceeds donated to:

**THE LIKULEZI PROJECT (registered charity 12838)**

**Email: [info@africaaware.net](mailto:info@africaaware.net) [www.africaaware.net](http://www.africaaware.net)**

Please contact the charity directly for further information, or ask us for a leaflet explaining their work

**OPEN MONDAY - FRIDAY. 10am - 5pm.**

**ALWAYS WANTED:** Smaller pieces of furniture, household & electrical items.  
**Drop in to shop, or ring/text Jane on 07795 193090 for collections.**



**1 in 5 patients** are cared for thanks to Gifts in Wills. To support local patients please search **Lewis-Manning Hospice Care** online or call **01202 708470**.



## MyTime Young Carers Win Prestigious Charity Award



**M**Ytime Young Carers Charity has won the Stephen Lloyd Award, a highly prestigious charity award which is coordinated and funded by the Bates Well Foundation.

The award has been granted in support and recognition of MYtime's School Support Programme, which seeks to raise awareness of young carers within school communities, to equip schools with the tools and knowledge to be able to

identify and more effectively support young carers and to make sure that young carers have everything they need to be happy and successful in education and beyond.

The Stephen Lloyd Awards, which seek to recognise and support early-stage charities and enterprises which serve a social purpose, and which are now in their 6th year, have provided financial and pro bono backing to a wide range of organisations since their establishment in 2015.

Created to honour the memory of the late Stephen Lloyd, former Managing Partner of Bates Wells, the Awards help early-stage enterprises that have an innovative idea which deliver genuine, sustainable social change, to get off the ground. Assisting organisations such as these was a passion of Stephen's, and the Awards have continued Stephen's legacy by making a significant, positive impact on a wide range of social enterprises in need of professional guidance or financial support.

Stephen Lloyd Awards winners are democratically selected by the entire community of charity and social enterprise experts who support the awards. That community includes philanthropists, social investors, lawyers, accountants, governance and management specialists and many others. Winners also receive valuable pro bono support from that community.

MYtime CEO Krista Sharp said: "We are absolutely blown away to have won the Stephen Lloyd Award. It was a huge honour to have been

shortlisted and to be considered alongside the other exceptional projects involved. We were one of 10 finalists and were pitching for support for our recently launched MYtime School Support Programme.

"The judging process involved us producing a 1-minute pitch, which was shared with 130 people at an online awards ceremony. The online judges then selected three charities who they wished to learn more about, and were subsequently assigned to three different breakout rooms, one after the other. Within the breakout rooms, each charity had ten minutes to further showcase their projects and its ambitions. We were asked some really thought-provoking questions by the judges and were able to share more about our vision for support for young carers in schools.

"The audience was then asked to vote for their favourite project, and we were thrilled to say we won! This award comes with £20,000 and some incredible pro-bono support. We are delighted that two former young carers who were in the audience and are now both lawyers, with exceptional expertise in both risk management and charity law, have offered to join our growing trustee board.

"Thank you so much to MYtime's Director of Fundraising, Penny Day, who wrote the most amazing presentation and spoke so fluently about her own experiences as a teacher. This award is a true recognition of all the hard work the team at MYtime have put in over the past year, and I couldn't be any prouder of their commitment, passion and ambition to level the playing field for all young carers."

Concluding, Penny Day advised: "The Stephen Lloyd Award will provide us with an incredible opportunity to continue our growth and achieve our ambitious goals. It will enable us to expand our work with schools across Dorset and also to reach out to other areas across the UK. Hearing that we had won quite literally took my breath away! We are just blown away to have been given such a special opportunity and to now be included in the incredible Awards network."

49% of young adult carers (aged 18-25) are currently unemployed. The MYtime School Support Programme seeks to encourage schools to review their provision for young carers and is designed to improve a young carer's educational experience and outcomes. The programme launched in September 2020 and is now running in twenty-eight local schools in Dorset.



# Swanage Pays Tribute To Julie Wheeldon

Recently we very sadly lost a well-known member of the Swanage community - Julie Wheeldon. Julie was truly a larger than life character and, had times been different, she would have had a packed funeral with standing room only as her community gathered to say goodbye. As it was, the current climate dictated that her funeral was small due to coronavirus. Julie was taken for a last drive around the town she loved so very much on her way to her final rest and members of the community stood in the town centre to bid her farewell as the hearse, adorned with flowers and wreaths, passed by.

In typical Julie style, she had left instruction that Councillor William Trite should read her tribute.

Bill has very kindly shared this tribute with us, in full, below. Therefore all those who were not able to make the funeral in person may share in the memories of Julie - a true character who will never be forgotten.....

## THE TRIBUTE - by Bill Trite:

We are here today to bid farewell to a longstanding, forthright, genuine, beloved and - in the nicest sense of the word - mischievous friend. Our sincere condolences go to Julie's family - those closest to her who feel her loss most acutely: daughter Lucie, son-in-law Robert and grandson Samuel, and of course her close companion of so many years, Tom.

To say that Julie Wheeldon was a once-met-never-forgotten individual, or a larger than life character, is true, but that only hints at her personality and her story, as does that familiar description of her as one of a kind - although a one-off, she certainly was. One friend likens her life to the passage of an iceberg, with at least four-fifths of it unknown to and unseen by the uninitiated observer. For us mourning her today, we do so because when we looked beneath the surface we found someone most thoughtful, humane and truly caring, in addition to someone traditionally-minded, patriotic, realistic and worldly. Routinely she used her familiar forthrightness, her ability to dispute, her colourful language, for causes beyond herself, causes which were good and right and just and in the public interest and the interests of this town.

It was invariably a pleasure to encounter Julie, because you always knew things were about to get interesting - even if that wasn't always to your advantage. Her views were strong, her colours were always nailed firmly to the mast (never to the fence) and she always spoke as she found and as she felt - supplemented, of course, by generous verbal embellishment. Hardly anyone was spared - indeed, if she hadn't selected at least one expletive for yourself, you began to feel rather left out of things.

She would talk to anyone and listen to anyone, and if she could help someone in some way, she would always do so, even in cases where she had already indelicately explained to the person concerned that he or she was the author of his or her own misfortune. And as was so often said, she had a wicked sense of humour. I recall one occasion in the Mowlem, when a colleague introduced his new girlfriend to Julie. "Ooo" said Julie, "You're better looking than the last one dear, but you do have big feet." She also had a strong sense of the ridiculous, with zero tolerance of humbug, posturing and boastful lists of achievements. "Birds with that many feathers can't fly" was her response to any extended bragging.

Julie came originally from Hertfordshire, moving to Swanage in the mid-1960s with her parents Frank and Amy Hayward and brother Victor. The family ran Maidments the grocery shop in Station Road. Julie was to marry Billy Wheeldon at Poole Registry Office, Lucie being their only child.

Yet it was getting on for twenty years after arriving here that Julie became involved in local political affairs, the turning point being the famous (or infamous) Marina issue of the mid-'80s - perhaps the most divisive in the town's history. The decision went all the way to the House of Lords, with Julie proving adept as one of those presenting the case against a modern marina in Victorian Swanage. The matter was settled when, by a narrow margin, their Lordships agreed with Julie and the Swanage delegation. Perhaps it was just as well.

Subsequently Julie was elected to the Town Council in 1987 and to Purbeck District Council in 1988, being re-elected to both several times and never losing an election.

Julie loved the historic character of Swanage, its isolated charm, its beautiful setting, its uniqueness and its quirkiness. As a Councillor she took a particular interest in housing. Many people in Swanage today owe their housing to Julie, who went out of her way to try and get Swanage people in housing need re-housed in the town rather than elsewhere. Local government housing officers often found themselves facing a dilemma: either accede to Julie's initially polite 'requests', or risk being subject to her wrath by sticking to a strict interpretation of the rules. She didn't always get her way - but she usually did.

Julie became a long-term fixture as Chairman of the Purbeck District



Planning Committee, and I'd like here to quote the words of former Senior Planning Officer Alan Davies, who knew Julie well in those years but was unfortunately unable to join us today:

"We have lost a true character, someone who loved Swanage and Purbeck. With Julie chairing the Planning Committee it was always an interesting experience. She was the life of the party when I drove the minibus for the Planning Committee site visits. One of her favourite expressions for something she didn't like at Committee was: 'It's like a pea on a drum', which always made me chuckle despite sometimes being unsure of exactly what she meant. On occasions she would have her own agenda, which of course was quite acceptable, but I felt she would listen to officers like myself and at least go some way towards respecting our views, even if she finally felt it necessary to vote the opposite way to our recommendation. Not many people call me 'darling' anymore, as she did. She would always ask after my children and tell me about all the animals living in her garden."

Julie was, of course, unfailingly kind to animals and always had a horror of animal cruelty. She was a most effective Councillor, sometimes in unexpected ways. At one-point travellers took over King George's Playing Field and wouldn't budge. Time went on but no-one could shift them - not the Town Council, the District Council or the County - not even the police. Police reinforcements or more drastic measures were under consideration. Then Julie turned up at the scene and disappeared into one of their caravans. She emerged a little later and within just one hour the travellers were on their way. What she said to them, or did, is unknown to this day.

Julie became our Deputy Mayor in 1991 and remained in that position until 1994. These were years of unprecedented investment and change in Swanage, engineered to a large extent by the Town Council. Innovations included a thoroughgoing seafront enhancement scheme, fundamental flood alleviation measures, a new town centre supermarket near the railway station (which required a town referendum), the creation of the Purbeck Business Centre based on the former Pava building, the restoration of the Pier, and a state-of-the-art sewerage improvement scheme and treatment plant. The last-mentioned involved construction of a long, wide-bore tunnel from Victoria Avenue car park to the southern end of the bay, right under the centre of the town. Julie was particularly tickled when the huge tunnelling machine was named "Big Julie" in her honour by the workforce.

But some of these changes were controversial and caused considerable ill-feeling in certain quarters. Julie became Mayor in 1994 and found she had inherited a situation requiring a period of calm, mutual toleration and drawing together - qualities not always associated with someone seen as feisty and outspoken. That year and Julie's two further years as Mayor were characterised by consolidation and re-unifying of the town showed the true breadth of her abilities and her determination that Swanage under her leadership should resume the nature and persona which had first meant so much to her.

We shall not see her like again. Her light is gone but the warmth remains.

WS Trite 19/11/2020



# When a care home's not on your 'to-do' list



**"Moving into a care home". What were your first thoughts on reading those words? Resignation, dread, the worry that it would mean having to sell your home?**

Chances are you want to live well in your own home for as long as possible – research shows that nearly three quarters of us feel that way.

But what if illness, dementia or Parkinson's means living life your way isn't easy? Perhaps a care home might be a good idea after all?

## **THERE IS ANOTHER WAY, AND IT'S CALLED LIVE-IN CARE**

It's an affordable alternative to moving into a care home. A care worker comes to live with you. And as you are still living there your home's value isn't taken into account as an asset.

## **A PERSONAL APPROACH TO ARRANGING LIVE-IN CARE.**

Having someone coming to live in your house can be a big step. That's why Agincare takes so much care matching client and live-in care worker- a process carried out by people, not a computer.

Agincare looks for hardworking people with a special blend of compassion, reliability and a great sense of humour. All the care staff are English- speaking and enhanced DBS (police) checked.

## **CARE TAILORED TO YOU**

It can be companionship so you don't feel lonely. If you need support with medication, eating

and drinking, housework, your care worker is there to help you.

Agincare is experienced in supporting people with dementia, MS, Parkinsons and cerebral palsy, and providing reassuring and sensitive palliative and end-of-life care.

## **CARING FOR SOMEONE WITH DEMENTIA**

Agincare's live-in care workers use familiar possessions and daily routines to stimulate conversations and memories, helping to stem the progress of dementia and memory loss.

## **REGULATED AND MANAGED CARE**

Agincare's live-in care service is special because they fully manage it. Other live-in care services offer less protection and fewer guarantees for the same price.

Agincare employs and pays the care staff, which means they have a duty of care. For example, if your care worker is ill, it's Agincare's job to find someone to replace them.

Agincare is fully regulated by the Care Quality Commission, giving you a higher level of protection and peace of mind. And they're always at the end of a phone should you need support.

## **HELPING YOU BACK ON YOUR FEET**

If you're worried about recovering at home after illness, a hospital stay or fall, live-in care can give you intensive support to regain your independence and skills.

## **WHAT OUR CLIENTS HAVE TO SAY ABOUT OUR SERVICE**

**97%**

My care worker supports me in a way we've agreed

**98%**

I'm treated with politeness and respect

**95%**

I feel comfortable and safe with my care worker

**97%**

The service has helped improve my quality of life

**97%**

Overall I'm satisfied with the service from Agincare

**93%**

Would you recommend a friend to us if they needed care?

Data from 2020 Client Satisfaction Survey

**Agincare**  
Live-in Care




Call Agincare now on  
01929 448 947 or go to  
**agincare.com/live-in-care**





**JUNE FRITH**  
**07507 933219**  
 info@swanageflorist.co.uk  
**Swanage flowers**  
*for every occasion*  
**Birthdays, Weddings,**  
**Funerals, Events**



**AURORA** www.auroracbdhealth.co.uk  
 CBD HEALTH  
**Best range of CBD products including:**  
**Oils, Tea, Balms, Edibles, Vapes**  
**and lots more!**  
**Opening times:** 42 Station Rd  
**Mon - Sat 10am - 5pm** Swanage  
**Sun 11am - 3pm** BH19 1AF

## Gaia's Guide Released To Help Families Of Missing People

**Gaia's Guide: a Community Organising Guide to Help Keep Missing People Safe has been produced in memory of Dorset teenager Gaia Pope, who went missing on 7 November 2017 and whose body was discovered three years ago.**

**G**aia Pope's disappearance made national headlines in 2017 with thousands of people joining the public effort to find her.

Gaia's guide, backed by Missing People and designed for friends and family when someone disappears, is now available to download online for free.

The family of Dorset teenager Gaia Pope released Gaia's Guide: a Community Organising Guide to Help Keep Missing People Safe, three years to the day since the 19-year-old's body was found on a coastal path near her hometown of Swanage in Dorset. Pathologists found that Gaia died from hypothermia and the inquest is due to take place in May 2021. Senior Coroner for Dorset Rachael Griffin has stated: "It is arguable that acts or omissions by Dorset Police may have been or were contributory to Gaia's death."

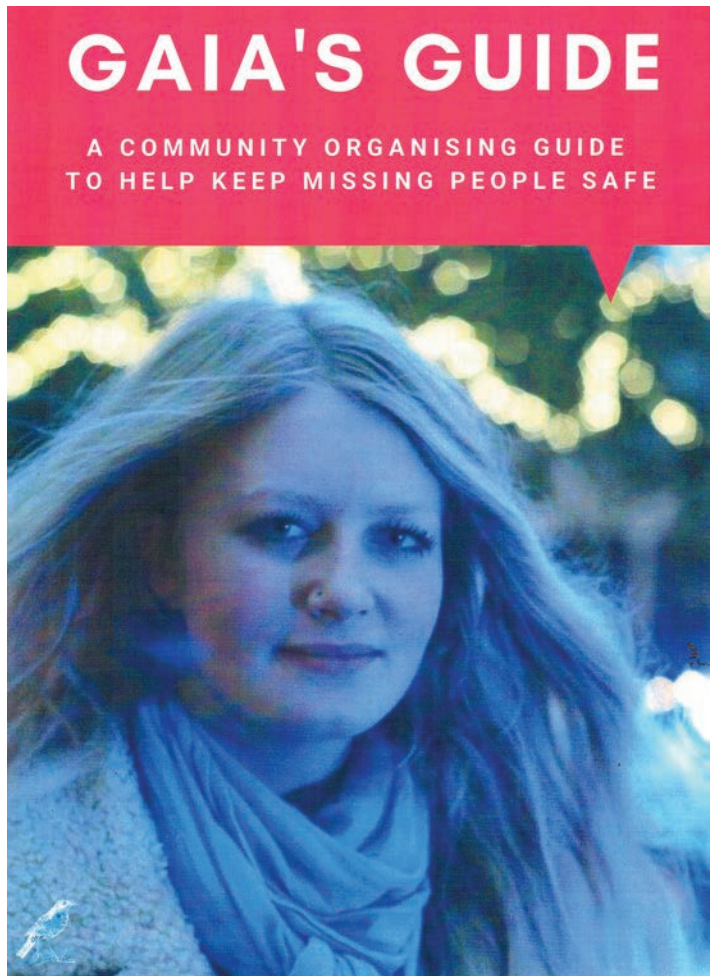
After her disappearance on 7 November 2017, Gaia's story made national headlines with hundreds of volunteers joining the search and thousands taking action online, thanks to community organising efforts led by friends and family. Gaia's Guide provides step-by-step guidance to mobilise and support a community response when someone goes missing, covering everything from how to search to engaging with the press and police. The guide is now available to download free from justiceforgaia.com as well as on the new Missing People website.

Gaia's twin sister Maya Pope-Sutherland, says: "When Gaia went missing I didn't know what to do, none of us knew what to do. We knew with public backing and attention the police would have to do something but I didn't know how to get the word out. If it wasn't for Marienna and all the volunteers I think we'd still be searching. We want to offer the guide so families know what to do. When someone you love disappears it's hard to even think straight. Hopefully Gaia's Guide will help."

Gaia's cousin Marienna Pope-Weidemann, who produced the guide, says: "Gaia's Guide has been a labour of love for her. Though in cases like Gaia's community action can be the difference between life and death, shockingly there are no national police procedures informing families what they can expect. That needs to change. Meanwhile, going back over what happened hasn't been easy but it's worth it if Gaia's Guide can help other families through that nightmare and bring even one missing person to safety."

Remi Arnold, Family Support Manager at Missing People, says: "It's heart warming to see something good come from such a tragic event. There is something very powerful about family members using their own experiences to help and support others. We're pleased to include this brilliant resource on our website. Gaia's family should feel proud of this great work; it's a wonderful way to honour her memory."

Jane Hunter, Senior Research and Impact Manager at Missing People, said: "Gaia's guide is an amazing resource, not only because it's so informative but because it's been made with such thoughtful consideration towards



**GAIA'S GUIDE**  
 A COMMUNITY ORGANISING GUIDE  
 TO HELP KEEP MISSING PEOPLE SAFE

the missing person themselves as well as those affected. What a great thing for her family to want to do to help others."

Someone is reported missing in the UK every ninety seconds. That's 180,000 people a year and rising. For example, there has been a 77 percent increase in London alone since 2010.

Gaia's Guide reports that people from low income or Black and Minority Ethnic (BAME) backgrounds and those with physical or mental health conditions are most at risk, while government austerity cuts have crippled the health and social care services people rely on when at their most vulnerable, in time of illness, trauma or financial difficulty.



**seventhwave**  
 Durlston Castle, Lighthouse Road,  
 Swanage. BH19 2LJ  
**HAPPY NEW YEAR TO ALL!**  
 Contact us: 01929 421111 www.seventhwave.com  
 seventhwaverestaurant@gmail.com



**PURBECK**  
**COAST** 101.2FM  
 YOUR COMMUNITY RADIO STATION, BROADCASTING FROM THE COMMUNITY,  
 FOR THE COMMUNITY AND BY THE COMMUNITY. LISTEN LIVE TO DAVID  
 HOLLISTER ONLINE ON DRIVE TIME, WEEKDAYS, FROM 4-6PM  
 www.purbeckcoast.com text: 07553 236500 01929 424424  
 hello@purbeckcoast.com Twitter Purbeckcoast Facebook Purbeck Coast



# Dorset Council Presents Proposals For 2021-22 Budget

**D**orset Council has published its initial proposals to deliver a balanced budget next financial year, 2021-22. These proposals will go to both the Place & Resources Scrutiny Committee and the People & Health Scrutiny Committee for consideration on 11 December.

The council is required by law to set a balanced budget – in other words, expenditure must be balanced by income. However, this year's budget setting exercise takes place against a continuing national background of extreme financial pressure for councils resulting from the coronavirus pandemic.

The council's Covid-19 response has resulted in additional expenditure for things like support for vulnerable residents, PPE, Covid-secure arrangements, and lost income for things like car parking, leisure services, business rates and council tax. The Government has provided some funding for these additional costs and loss of income but not enough to meet the full impact, which leaves a budget gap that has to be covered. There is a high level of uncertainty about future cost pressures, depending on, for instance, whether there are further lockdowns and other measures needed to slow the spread of the virus.

Like most councils across the country, Dorset Council also faces budget pressures from the growing need for social care, with an ageing population. In total, this means that Dorset Council faces a budget gap of just under £42m in 2021-22. The council proposes to cover this gap with a wide range of tactical and transformational savings which aim to improve efficiency and protect frontline services. The council also proposes to increase council tax next year by just under 2% and to levy the adult social care precept of just under 3% - in line with the Government's Spending Review. This would equate to £1.62 extra a week for a Band D property.

The budget proposals for 2021-22 also include an assumption of a 0% pay award for council staff. The Chancellor's recent Spending Review announced that public sector pay would be "paused". While central government has no formal role in deciding local government pay, which is negotiated nationally by employers with trade unions, it is likely that local government pay will follow suit.

Following discussion of the budget proposals for 2021-22 at the Scrutiny committees, the proposals will be reviewed and then submitted to the Cabinet meeting in January, and then finally to the Full Council meeting in February for final approval.

Cllr Gary Suttle, Portfolio Holder for Finance, Commercial and Capital Strategy, said: "It has been particularly challenging developing the budget for next financial year, 2021-22, due to the high level of uncertainty caused by the Covid pandemic. Covid has had a massive impact on our communities and our budget this year and this is likely to continue over the coming months.

"We believe we have developed proposals which will deliver a balanced budget. But it has not been easy and it is with a heavy heart that we have had to include proposals for a council tax increase.

"We understand that many residents and local businesses have been hit financially by the pandemic, and there will be support available for the hardest hit. The budget assumption of a pay freeze for staff is also made with a heavy heart when we are keenly aware how hard staff have worked for many months.

"These are tough choices, but we have to find ways to fund the support for communities through the pandemic and the ever-growing need among our residents for social care services. We continue to lobby the Government for further funding. And we will endeavour to protect the vital council services on which so many residents rely."

## HIGH STREET CAFE

Great local food, just how you like it!

Join us for a superb full breakfast, cooked just how YOU like it, to order, using fresh ingredients.  
*Vegetarian options available*

THE BEST BREAKFAST CAFE IN TOWN!

CLOSED ON THURSDAYS

3 High Street, Swanage. BH19 2LN. 01929 427542

## The Town House

The Square, Corfe Castle. 07427 003500



**We have a wonderful selection of:  
Original Vintage Children's Books from  
1915 onwards - lots from the 1940s.  
We also have Film Books and Navy Books.  
Plus all of our usual lovely stock as well!  
*Come and be delighted!  
A warm welcome awaits! you!***

PURBECK  
**COAST**  
101.2fm

**HAPPY  
NEW YEAR**  
**FROM ALL THE TEAM**

Tune in to get the most  
from the coast  
in 2021!

[purbeckcoast.com](http://purbeckcoast.com)





# Why Is The Local Plan Important?

The Dorset Council Local Plan sets out planning policies and allocations to meet the needs of the whole of the Dorset Council area until at least the year 2038.

Once adopted, the Local Plan, alongside any Neighbourhood Plans, will be the legal starting point in determining planning applications for the area. The papers and plan can be viewed at: <https://modern.gov.uk/dorsetcouncil.gov.uk/mgAi.aspx?ID=6723#mgDocuments>

If there isn't a local plan in place then the ability for Dorset Council to influence the location and character of developments is limited.

## Why is consultation important?

Planning affects the future of Dorset. The council wants to be sure that everybody can be involved in both the preparation of the Local Plan and decisions on planning applications. Involvement of public and stakeholders through the plan making process is important, as it allows local knowledge and expertise to be gathered from a wide range of perspectives.

## Who will be consulted?

The council is required to consult with a range of stakeholders including public bodies such as the Environment Agency and voluntary bodies such as local charities. The council will continue to consult town and parish councils, who can provide a wealth of local knowledge and represent the concerns of local residents.

The Duty to Cooperate, a legal test that requires cooperation with neighbouring planning authorities, means that the council will be talking to neighbouring councils to ensure that all housing and employment needs have been met. To ensure proposals are deliverable, the council will work with local landowners and the development industry, alongside infrastructure and service providers.

The council believes that all residents and businesses operating in the area should have the opportunity to be involved in the plan making process and they are therefore invited to comment on the draft local plan.

## When will this happen?

The first Dorset Council Local Plan consultation will begin in January 2021 and will last for eight weeks. There will be a further opportunity to comment in late 2021 before the Plan is submitted for independent examination and adopted in 2023.

## How you can have your say

The draft Dorset Council Local Plan will be available on the council's website at: [www.dorsetcouncil.gov.uk/dorset-local-plan](http://www.dorsetcouncil.gov.uk/dorset-local-plan). During the consultation, there will be displays in libraries where you can borrow a hard copy of the plan. A dedicated phone line will be available for enquiries from Monday – Friday. The council will also be holding virtual webinars on key themes within the Local Plan for residents to discover and ask questions about proposals.

There is also a series of podcasts that have been developed to help people understand key local plan topics such as consultation, housing, the Green Belt and infrastructure (including roads and public transport). These are available via Spotify, iTunes and Anchor. Cllr David Walsh, Dorset Council portfolio holder for planning, said: "We are planning for Dorset's future, for the future of our residents. It is so important that we understand everyone's view on the draft Local Plan as much as we can. We are working closely with all our stakeholders, our own councillors and town and parish councils to make sure we reach all parts of Dorset."

## What will happen to the old local and neighbourhood plans?

The Draft Dorset Council Local Plan has used all the information gathered by the former borough and district councils. The Purbeck Local Plan is the only one that was at an advanced stage and, once it has completed a final consultation and been independently examined, it will form part of the Dorset area plan until the Dorset Council Local Plan is adopted. Neighbourhood plans will be used in conjunction with the overall Dorset Council Local Plan to inform planning decisions.

# Stay Safe And Warm This Winter!

With much colder weather on the horizon, Dorset & Wiltshire Fire and Rescue Service is reminding people about the best ways to stay safe and warm this winter.

Safe & Well Manager, Vikki Thomas, said: "Although it has been fairly mild so far this winter, colder weather is just around the corner. As temperatures drop, it's inevitable that people will want to spend more time indoors, staying as warm as possible. Using additional heating is understandable, especially for anyone now working at home all day as well, but this can increase the risk of fire. By following some simple advice, you can stay safe and warm."

She added: "We are here to help and offer advice. If you are in doubt over any fire safety issues, please do get in touch, and always remember to test your smoke detector every week, as working smoke detectors save lives. We'd also recommend carbon monoxide alarms to warn against the risk of CO poisoning – it could be the best thing you buy this year."

- Open fires can provide a relaxing and atmospheric way to keep warm, whereas portable heaters are handy to move around – but it's important to use them safely:
- Always use a fire guard to protect against flying sparks and hot embers from an open fire.
- Use a metal container to store any ashes.

- Make sure ashes are not left near any potentially flammable objects.
- Ensure ashes are completely out before disposing.
- Make sure embers are under control and properly extinguished before you go out or go to bed.
- Get your chimney swept regularly.
- Keep heaters at least one metre (3ft) away from curtains and furniture and never use them for drying clothes.
- Always unplug electric heaters when you go out or go to bed.
- Gas fires should be serviced every year by a competent engineer.
- Electric blankets can help you keep warm during the cold nights, but they can be a danger if not used properly – 440 injuries result from every 1,000 fires started by an electric blanket:
- Never use hot water bottles in the same bed as an electric blanket, even if the blanket is switched off.
- Unplug blankets before you get into bed, unless they have a thermostat control for safe all-night use.
- Folding up electric blankets damages the internal wiring, so store them flat or rolled up instead.

Dorset & Wiltshire Fire and Rescue Service offers free Safe & Well checks - to find out more, call 0800 038 2323 or visit [www.dwfire.org.uk](http://www.dwfire.org.uk)

# Appeal To Identify Indecent Exposure Perpetrator

## Ongoing investigation into exposure incidents in Dorchester and Purbeck – CCTV appeal

Detectives have issued CCTV footage of a man they would like to identify as they continue to investigate a series of indecent exposure offences in the Dorchester and Purbeck areas. At least forty incidents have been reported since 2002 and officers believe the same offender is responsible.

They occur at night and typically involve a man standing outside of the victim's address exposing himself or committing an act of gross indecency. The majority of the victims are woman aged in their 40s, 50s and 60s.

The offences have occurred sporadically and none were reported for the first eight months of this year. However, in recent weeks incidents have been reported in Dorchester and Swanage, with the latest incident on Saturday 14 November 2020. Detectives from Weymouth CID have been carrying out a range of enquiries since 2002 into this series and

made several public appeals to try and identify the offender. They are now issuing CCTV footage of a man they are keen to identify as part of their ongoing investigation.

Detective Sergeant Andy Marsh, of Weymouth CID, said: "We recognise the distress these incidents have caused to the victims involved. This has been a long-running investigation and we have continued to explore a number of lines of enquiry to try and identify the man responsible. We are now releasing CCTV footage connected to an incident in Charminster in December 2019 of a man we are keen to identify as part of our enquiries. I appreciate it is not the best quality footage, but we owe it to the victims to do all we can to try and establish who is responsible for these offences.

**To view the footage:** <https://www.dropbox.com/s/xgwvdbbr26elujx/Op%20Pitchfork.mp4?dl=0>

Anyone with information is asked to contact Dorset Police at [www.dorset.police.uk](http://www.dorset.police.uk), via email [101@dorset.pnn.police.uk](mailto:101@dorset.pnn.police.uk) or by calling 101, quoting occurrence number 55190164124.



www.villageinn-swanage.co.uk  
01929 427644

**Ullwell** VILLAGE INN 1.5 miles from Swanage

**WISHING ALL OF OUR CUSTOMERS  
A HAPPY, HEALTHY 2021**

We are sorry it has been necessary to close  
at present and will hope to see you  
again from FEBRUARY or MARCH 1st 2021

## Appeal For Information Van Thefts

Local officers are appealing for information following a spate of break-ins to vans in Crossways.

A total of five incidents were reported in the area on Saturday 28 November, Sunday 29 November and Monday 30 November 2020. The incidents occurred during the hours of darkness and items stolen from vans include power tools and gardening tools. Police Community Support Officer Alison Donnison, from the local neighbourhood policing team, said: "We are investigating this series of offences and I am appealing to anyone who has witnessed any suspicious activity in the area overnight recently to please contact us. I would also urge anyone who has come across tools being offered for sale in unusual circumstances locally to get in touch."

Anyone with information is asked to contact Dorset Police at [www.dorset.police.uk](http://www.dorset.police.uk), via email [101@dorset.pnn.police.uk](mailto:101@dorset.pnn.police.uk) or by calling 101, quoting occurrence number 55200180016. Alternatively, to stay 100 per cent anonymous, contact the independent charity Crimestoppers online at [Crimestoppers-uk.org](http://Crimestoppers-uk.org) or call Freephone 0800 555 111.

## Census 2021 Is Coming!

Households across Dorset along with the rest of England and Wales will soon be asked to take part in Census 2021. The census is a ten-yearly survey that gives us the most accurate estimate of all the people and households in England and Wales. It has been carried out every decade since 1801, with the exception of 1941.

It will be the first run predominantly online, with households receiving a letter with a unique access code, allowing them to complete the questionnaire on their computers, phones or tablets. Those residents who are unable to complete the Census digitally will be supported by a phone helpline, a network of Census Support Centres or by ordering a paper Census.

"A successful census will ensure everyone from local government to charities can put services and funding in the places where they are most needed," said Philip Eades, the Census Engagement Manager for the area covered by Dorset Council. This could mean things like doctors' surgeries, schools and new transport routes. That's why it is so important everyone takes part and we have made it easier for people to do so online on any device, with help and paper questionnaires for those that need them."

Census day will be on Sunday March 21st 2021, with households across the country receiving letters with online codes allowing them to take part from early March.

The census will include questions about your sex, age, work, health, education, household size and ethnicity. For the first time there will be a question asking people whether they have served in the armed forces, as well as voluntary questions for those aged 16 and over on sexual orientation and gender identity.

Initial results will be available within twelve months, although personal records will be locked away for one hundred years, kept safe for future generations. Residents can be assured that the Census form is completely confidential and personal data is not shared until the Census is opened up one hundred years later. On that subject, Census 1921 will be available for research early in 2021.

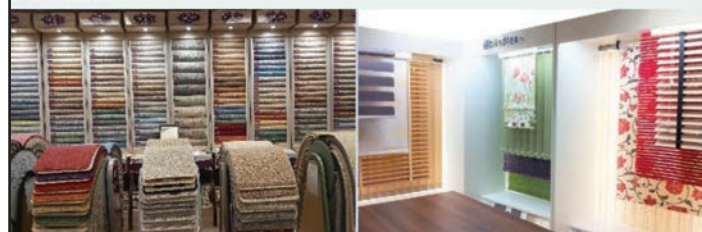
For more information visit [census.gov.uk](http://census.gov.uk), follow @CensusDorset on Twitter or contact Philip Eades on 07452 948119 or by e mail at [philip.eades98@field.census.gov.uk](mailto:philip.eades98@field.census.gov.uk)

**MJFurnishing**  
15 West Street, Wareham - 01929 552773  
[www.mjfurnishing.com](http://www.mjfurnishing.com)

From  
Carpets, Designer Flooring,  
Curtains and Blinds, to Sofas  
and Beds. We offer quality,  
affordability and unbeatable  
service



SHAKESPEARE  
Beds



**PURBECK MOBILITY**  
CENTRE  
SALES · HIRE · SERVICING

**HAPPY NEW YEAR  
EVERYONE!**



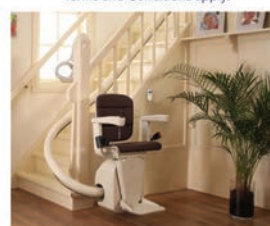
**£50  
VOUCHER**

to spend in shop with  
every riser recliner sale\*

\*One voucher with every riser recliner/sofa  
purchased in shop. Offer ends 26 March 2021.  
Terms and Conditions apply.



Difficulties getting in and out of the bath  
are easily solved with the Bathmaster Deltis.  
5\* recommendation from our customers.  
Contact us for a free home demonstration.



Solutions available for all types of stairs.  
Contact us for a free home assessment.

Come and meet us at St. Johns Hill, Wareham, Dorset, BH20 4NB

Disabled parking directly outside shop

Monday to Friday 9am-5pm, Saturday 9am-1pm.

[www.purbeckmobility.com](http://www.purbeckmobility.com)  
[shop@purbeckmobility.com](mailto:shop@purbeckmobility.com)

LIKE US ON FACEBOOK  
@Purbeckmobility

01929 552623

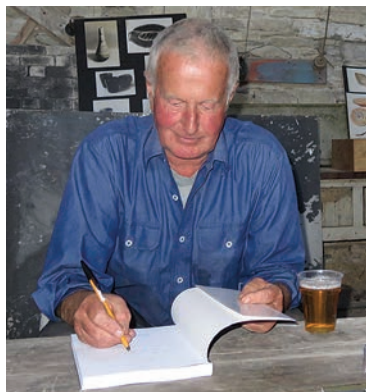


# Benjamin Jesty - The Modest Vaccinator

*Purbeckian Historian and author, Ilay Cooper, digs into the history of pioneering vaccinator and ex-tenant of Purbeck's Dunshay Manor, Benjamin Jesty....*



Above: Benjamin Jesty, pioneer of vaccination, tenant of Purbeck's Dunshay Manor 1796-1816. Publication thanks to the Wellcome Collection. Painting by Michael William Sharp, 1805.



Ilay Cooper writes.... (pictured, left)

**T**hey talk of moving Edward Jenner's statue back to Trafalgar Square from its exile in Kensington Gardens. Why not commission one of Benjamin Jesty instead? Buried in Worth Matravers' churchyard, he was the first Englishman to discover the effectiveness of vaccination, a classic example of a modest inventor neither seeking, nor receiving credit.

You've never heard of him? He was gazzumped by Jenner, who came to the same conclusion more

publicly in 1796, 22 years after Jesty. The only earlier vaccinator, by five years, was a German, Jobst Bose of Gottingen. Despite the cash rewards Jenner received, the modern fame of The Jenner Institute and everything that surrounds his name, he was not the pioneer: he merely exploited a business opportunity.

Farmer Jesty was among many who noticed that milkmaids rarely caught lethal smallpox. Frequent contact with cowpox, a similar but milder disease, seemed to be responsible for their immunity. As tenant of Upbury Farm, in Yetminster, he had already caught cowpox from his cattle and presumed himself safe from smallpox. The rest of his family were not.

Faced with a bad smallpox epidemic in that part of Dorset, he decided to see if the same immunity could be acquired artificially. It was known that material drawn from smallpox victims inoculated into healthy people granted them immunity but it could also give the patient full-blown lethal smallpox. Advertisements placed by itinerant inoculators were common in 18th century newspapers; often they were followed by reports of the

resulting deaths. Jesty wanted to protect his family without risking their lives: why not mimic the inoculators' practice but using less-virulent cow pox?

In nearby Chetnole there was a herd of pox-infected cattle so, armed with a household needle, he introduced matter from a sick cow into his wife's arm and those of his children. His wife suffered a bad fever for several days but the effect on the children was less severe.

All recovered unharmed, came through the epidemic unscathed and never afterwards caught smallpox. But Jesty suffered for his successful experiment; local folk thought vaccination from cattle ungodly, might result in some terrible anomaly. Would they all grow horns? They treated him with hostility. Such ignorance was forgivable at a time when the concept was revolutionary but, with Yetminster no longer welcoming, Jesty decided to move away.

By chance, Morgan Jones, the Worth Matravers vicar who described the Purbeck wreck of The Halsewell in 1786 in Worth's parish register, had been promoted rector of Ryme Intrinsica (yes, there is such a village) close to Yetminster and Jesty's birthplace. Hearing that he planned to move and knowing that Downshay/Dunshay Manor was in need of a tenant, he informed Jesty, who duly took the place. There's a date for their arrival in Purbeck: recently I noticed 'G Jesty 1796' incised into the hopper of Dunshay's gutter.

Dr Andrew Bell became Rector of Swanage in 1801; an opened-minded philanthropist (Herston's Bell St bears his name), he began to vaccinate and encouraged local teachers to follow suit. Hearing of this earlier vaccinator in Purbeck, he met Jesty and later introduced him to the Jennerian Society of London. There, as the earliest inoculator for 'Cow Pock', Jesty was asked to sit for a portrait, later acquired by The Wellcome Collection and currently on loan to Dorset County Museum.

So Jesty became known in London, where Jenner, awarded the huge sum of £30,000 for his 'discovery', was already a famous figure. The farmer appeared in his usual rustic clothes. John Colson, then vicar of Wareham, recorded that The Society was 'much amused by his manners and appearance' his clothes being 'peculiarly old-fashioned'.



Above: A seasonal view of Dunshay Manor, long after its 1906 restoration.





Above: A Drain hopper at Dunshay Manor, dated 1642, which was attached to Dunshay's facade in Jesty's time. It was moved during the restoration.



Above: 'G.Jesty 1796' incised into the drain hopper is the only faint trace of the Jesty family's stay at Dunshay. G stood for George, Benjamin's youngest son.

That diminished him in their eyes. Robert, his son, agreed to be inoculated with smallpox to prove his immunity, then Benjamin was presented with some memorial scalpels and sent home to Dorset obscurity. He did not object. But truth remains truth and every report crediting Jenner with Jesty's discovery is a foray into falsity. A glance towards Jobst Bose wouldn't come amiss, either.

In Purbeck, Jesty didn't give up vaccination. On the north wall of Worth church a plaque inscribed to one Mary Brown mentions that her mother '...was personally inoculated for cowpox by Benjamin Jesty of Downshay in this parish, the first person known to have introduced the practice.'

Benjamin ended his days at Dunshay, 200 metres from my current home and is buried beside his wife in Worth churchyard.

His headstone reads: "Sacred to the Memory of Benjamin Jesty of Downshay, who departed this Life April 16th 1816 aged seventy-nine years.

He was born at Yetminster in this County and was an upright honest Man particularly noted for having been the first Person (known) that introduced the Cow Pox by Inoculation and who from his great strength of mind made the Experiment from the Cow on his Wife and two Sons in the Year 1774."

As man's ingenuity defeats a new epidemic, there's good reason to celebrate Benjamin Jesty (and those Turkish immigrants in Germany, who created the Pfizer Covid vaccine!).

As for the anti-vaccinators, most bear the mark of the childhood vaccinations that protected them to maturity. Smallpox was a horror they didn't witness. Vaccination obliterated it, but not before I saw its results.

Crossing Asia in the 1960s meant meeting the survivors' terribly ravaged faces, those white-blind eyes. Smallpox-disfigured children took prime place among the beggars. Thanks to Jesty and his like it is long extinct. The rioting anti-vaccinators of his time failed to save smallpox for their descendants to enjoy.

The polio-lame kids of my generation are old now. No more followed: vaccination saved them. Polio kids lasted longer in Asia. Paralysed match-stick legs crossed, each on a little wooden platform set of castors, using hands to propel themselves through the streets, the poorest begged.

They have grown up now: immunisation protected the next cohort. Measles, yellow fever, typhoid, tetanus, cholera inoculations are commonplace now.

Spare sympathy for those who can't be immunised for medical reasons, and for the children of the anti-vaccinators. For the rest, let's hope the Covid-19 vaccination comes soon to grant us a few more years.



Above: Yetminster's church hides neighbouring Upbury Farm, Jesty's home until anti-vaccination hostility drove him out



Above: 15th century Upbury Farm, Yetminster, Jesty's home until anti-vaccination hostility drove him out. Photo by Robert Smith.



Above: The pioneer of smallpox vaccination, Benjamin Jesty beside his wife in Worth Matravers churchyard.



Above: Dunshay Manor house c1880. It is uncertain if the right side of the facade was already in this 'ruinous' state in Jesty's day.





# LiveWellDorset

## We've helped 1,231 people in Purbeck to make a lifestyle change

### Free health advice and coaching

We're a free health service for adults provided by your council. Do you want to lose weight, quit smoking, drink less or move more? We can help.

☎ **01305 233 105**  
 🌐 **livewelldorset.co.uk**



**REGISTER TODAY**



## National Coastwatch

*Eyes along the coast*

### View from the Lookout January 2021

One of the nice things about writing the first "View from the Lookout" of the year is to be able to reflect on the past year and to look forward to the new year.

To say that 2020 was a "funny old year" is probably an understatement! As a result of the pandemic restrictions, we had to shut for all of April and part of May and for the rest of the year we have had to operate with one watchkeeper on duty, backed up by a virtual "buddy".

Looking at the statistics for the year we've logged around half the number of vessels that we did in 2019. Even with some very busy days, during the summer (June, July and August), we logged 4920 vessels compared with 8673 in 2019. Interestingly, this pattern has repeated itself throughout the year, even before the pandemic took hold.

Although there has definitely been less traffic, some of the decrease can be attributed to the way we work. Our most important role is to keep a visual watch along our stretch of the coast. We "spot, plot, record and respond" with the emphasis on the spotting. It was noticeable that, with a single watchkeeper in the Lookout, the station log often had a note in it to say that the watchkeeper had decided to observe vessels rather than spend time recording them. We will often spend time observing the lone kayaker in the middle of the bay than the ten large sailing vessels passing the Point. On more than one occasion, over the years, this risk-based observation has meant that we have been able to stop a minor situation becoming an emergency.

We're sometimes asked how we distinguish different vessels without writing reams. Every NCI station uses a similar logbook, and we use a number of classifications and abbreviations to ensure consistency. At the highest level we divide vessels in to commercial, leisure, military and safety. The safety group doesn't just cover lifeboats but also police launches, pilot vessels and one our colleagues at St Alban's Head see more than

us, the Range safety vessels. Within these groups we subdivide them according to their function, with each group being given a short acronym.

The lifeboats that we see on exercise would be given the code AWLB (all weather lifeboat) or ILB (inshore lifeboat) depending on their type. In the bay our local fishermen would be given the code LFV (local fishing vessel) while the diving boats would be recorded as DVC (dive vessel – charter). The little dayboat that many people use for fishing would be coded MDB.

The codes soon become second nature, but every logbook has a full list inside the front cover to help us with new or less commonly seen vessels. We had to make use of these when the cruise ships moored up in Poole Bay in late spring. They are listed as MPR (marine passenger residential is my best guess!) Perhaps not so logical as our more commonly seen vessels, but understandable when you realise that many of the classifications were taken from the Lloyds List.

Sailing vessels are largely classified according to their sail configuration. Probably the most common is the Bermuda sloop (BS). Others are classified according to their type or build. Common ones are the motor cruiser (MC), rigid hulled inflatables (RIB) and kayaks (KC). An increasingly common one is the stand-up paddleboard (SUP).

Looking forward, 2021 see us entering our twenty-sixth year of operation. The pandemic meant that many of the celebrations and events we had planned for our twenty fifth anniversary had to be postponed, but we're hoping to run some during the new year. We're also hoping to reinstate our popular 'tea and cakes' events as soon as the restrictions allow us. Look out for notifications in the local press and on social media.

One thing we'd like to do is to build up a history of Peveril Point. We've been very lucky to have access to Swanage Museum's archives as well as the research from the design of the information panels, but would love to gather more information in the form of pictures over time, anecdotes, stories or simply people's thoughts about what Peveril Point means to them. If you have any thing you would like to share, please get in touch.

This is Swanage NCI, listening on channel 65 and wishing you all a happy and healthy New Year!

**Here's to calm seas, favourable winds, good visibility and sunny days. Swanage NCI out.**



If we all stopped  
throwing away food  
at home for one day,  
it could do the same  
for climate change  
as planting over  
half a million trees.  
Let's work together  
and make it happen!

Visit [OutOfDate.org.uk](https://www.outofdate.org.uk)



## Homeless At School

**53% of teachers in the South West have worked with homeless children - Shelter warns homeless children "must not be the invisible victims" of this pandemic**

In the last three years, more than half of state school teachers in the South West (53%) have worked at a school with children who were homeless or became homeless, a major study by Shelter and YouGov reveals.

The charity's findings show most teachers have first-hand knowledge of the damage done by the housing emergency to education — with it now commonplace to see children grappling with homelessness at school. With the impact of the pandemic making housing inequalities worse, Shelter warns that this desperate situation could worsen for the 2,730 homeless children living in the South West. In the last three years, some of the most devastating effects seen by teachers with experience of working with homeless children or those living in bad housing in the region include hunger, tiredness, absenteeism, and poor hygiene:

87% of these teachers reported children missing school as a key issue. This is often because children can face significant difficulties with their journey to school if they become homeless and are accommodated a long way from their former home. 92% reported children coming to school hungry. Temporary accommodation such as B&Bs and hostels are often not equipped with suitable or any cooking facilities.

98% reported tiredness as an issue for homeless children and those living in bad housing. In overcrowded accommodation children may struggle to sleep. 91% reported children arriving at school in unwashed or dirty clothing. This can be caused by a lack of proper or affordable washing facilities in temporary accommodation, as well as issues such as mould and damp in poor-quality housing.

In order to explore the themes raised by its polling in more detail, Shelter also carried out anonymous interviews with eight teachers working in primary and secondary schools.

One of the teachers interviewed reflected on how exhausted a young pupil became because she was moved to emergency homeless accommodation in a different area: "She leaves home at 6am every morning to get to school because the local authority have no homes so she has been temporarily

rehoused [out of the area]...the family of four are living in one room at a B&B. Her attendance has dropped severely, she has become ill and she is always tired."

To understand the impact of the pandemic on the education of homeless children and those trapped in bad housing, Shelter conducted a follow-up survey with teachers working across Britain as schools re-opened their doors in October. The national results paint a worrying picture, with pandemic disruptions appearing to have set children without a suitable home even further back. Almost three-quarters of teachers (73%) say homeless children or those living in bad housing have had their education more negatively affected than children in suitable housing.

Alongside its bid to get more secure social homes built, Shelter is urging the public to support its frontline services as they contend with a surge in demand triggered by the pandemic. Shelter's services are open 365 days a year to provide expert advice and support to families facing homelessness, which includes helping families to access a safe home.

One of the families Shelter has supported this year is single dad Mark Holland, 34, and his six-year-old daughter Macy. Mark and Macy, from Hertfordshire, became homeless in 2019. Throughout the first national lockdown they were forced to sofa surf. After the lockdown ended, they were placed into temporary accommodation by their local council. But it was so far from Macy's school it required two long bus journeys, with the fares costing £100 per week.

Mark said: "The temporary accommodation was awful. There was hardly any room for me to help Macy with her schoolwork; we didn't even have a small table. There were people hanging around outside who would disturb Macy's sleep. We didn't have our own kitchen facilities, which made it harder for me to cook for her. But the worst part was being so far from her school. I worried about the longer journey making Macy tired. She is super smart and loves school. But the temporary accommodation meant that she didn't have the space and quiet she needed to rest and recuperate."

With Shelter's support, Mark and Macy moved into their new permanent social home in November 2020. Both are looking forward to spending their first Christmas in their own home.

**To donate to Shelter's urgent winter appeal and give hope to families facing homelessness, please visit [www.shelter.org.uk/donate](https://www.shelter.org.uk/donate)**



# Business



## Redmayne Bentley

### ESG Investing

ESG investing focuses on the consideration of Environmental, Social & Governance issues to make investment decisions. It has been referred to a lot recently in many articles I have seen, seemingly prompted by investment providers and investors becoming more aware of these issues, perhaps driven by a combination of the Coronavirus pandemic and increasing regulatory pressure.

Companies and collective investments can incorporate their ESG credentials in different ways: they can generally integrate social and ethical considerations by excluding products or areas, such as armaments and gambling. They can take a more proactive approach and focus on sustainability and impact investing - investing with the intention of generating a positive, measurable, social & environmental impact alongside a financial return. They can also utilise stewardship, the responsible use of capital to create long term value for clients and beneficiaries, leading to sustainable benefits for the economy, environment & society.

Whatever the rationale and approach, each investment has to be considered on its own merits and there are no set standards or scoring for assessing the level of a company's or investment's ESG criteria.

The Financial Conduct Authority has stipulated for some time that investment professionals need to include questions with reference to an individual's preferences, but this is likely to go further and be more specific in the future. The Sustainable Finance Disclosure Regulation becomes effective on 10th March 2021 and this will require financial market participants and financial advisers to disclose how they integrate ESG factors into their investment and risk management processes. It is aimed at increasing transparency and to help avoid 'greenwashing', the practice of companies claiming that they are greener/more ESG conscious than they actually are.

While it is commendable to invest in an ESG-responsible manner, just because an investment claims to meet this description, it doesn't necessarily make it so, or one that will provide a good return. The investment itself stills needs to be analysed to evaluate its merits and drawbacks, its longevity and whether it is suitable for an individual's needs and risk profile. However, I do expect that ESG will continue to be an area of increasing interest for investors.

As we head into the new year, I trust it will be a happy, healthy and more normal year for you and your families.

Until next month, take care and stay safe.

**Kate Spurling, Investment Manager, Redmayne Bentley, Tel: 01202 714 450**

Redmayne Bentley is authorised and regulated by the Financial Conduct Authority. Members of the London Stock Exchange. The Redmayne Bentley Bournemouth and Poole office is located at 139 Commercial Road, Ashley Cross, Poole, Dorset, BH14 0JD. Follow us on Twitter @redmaynebentley and visit us on the web at [www.redmayne.co.uk/bournemouth](http://www.redmayne.co.uk/bournemouth)



### Beware tax deadline scammers

Fraudsters are continuing to target taxpayers with scam emails in advance of the 31 January deadline for submission of Self-Assessment returns. In fact, over the last year, HMRC received more than 846,000 reports about suspicious HMRC contact.

A number of these scams purport to tell taxpayers they are due a tax rebate or tax refund from HMRC and ask for bank or credit card details in order to send the refund. The fraudsters use various means to try and scam people including making contact by phone calls, texts or emails. In fact, fraudsters have been known to threaten victims with arrest or imprisonment if a bogus tax bill is not paid immediately.

HMRC's dedicated Customer Protection team to identify and close down scams but is advising customers to recognise the signs to avoid becoming victims themselves. For example, genuine organisations like HMRC and banks will never contact customers asking for their PIN, password or bank details.

If you think you have received a suspicious call or email claiming to be from HMRC you are asked to forward the details to [phishing@hmrc.gov.uk](mailto:phishing@hmrc.gov.uk) and texts to 60599. If you **have suffered financial loss you should contact Action Fraud** on 0300 123 2040 or use their online fraud reporting tool.

#### MKL Accountants Limited

Chartered Certified Accountants  
Herston Cross House, 230 High Street  
Swanage BH19 2PQ

T: 01929 425552

E: [mail@mkla.co.uk](mailto:mail@mkla.co.uk)

W: [www.mkla.co.uk](http://www.mkla.co.uk)

## John Garner Copywriting

- Brochures
- Website and SEO copywriting
- Features and articles
- Press releases
- Blogs
- Email content
- Direct marketing letters
- Newsletters
- Proofreading



[johngarnercopywriting.co.uk](http://johngarnercopywriting.co.uk)  
[johngarnercopywriting@gmail.com](mailto:johngarnercopywriting@gmail.com)  
**Mobile: 07827 871261**  
**Office: 01929 556245**

### Local Financial Advice

*Investments, pensions, protection and mortgages for your family or business.*

**Quilter**  
Financial  
Advisers

For a free initial consultation  
contact Ian Futcher on:

**M: 07581282440 E: [ian.futcher@quilterfa.com](mailto:ian.futcher@quilterfa.com)**



**SWANAGE INSURANCE BROKERS Ltd**

Authorised and Regulated by the Financial Conduct Authority

**PAYING YOUR LENDER TOO MUCH  
FOR YOUR HOME INSURANCE?**

CONTACT US FOR AN ALTERNATIVE QUOTE

**Tel: 01929 424228**Email: [office@swanageinsurance.co.uk](mailto:office@swanageinsurance.co.uk)**MOTOR – COMMERCIAL – LIABILITY – EVENT – TRAVEL****DC Raise £5,000****Dorset Council employees raise £5,000 for charity with the support of local businesses**

Employees from Dorset Council rallied together during the second lockdown to raise more than £5,000 for charity. Colleagues across the council organised a series of virtual events, such as a raffle, quizzes, dress-up day and a silent auction to raise money for BBC's Children In Need and local charity the Friends of Dorset Care Leavers. Some colleagues took on personal challenges too, including a sponsored silence, going sugar-free and running.

BBC's Children In Need helps fund projects in communities across the UK and Friends of Dorset Care Leavers helps young people leaving care through activities, gift packages and general support. The money raised will be split equally between the two groups. Local businesses were amongst those which kindly donated prizes, as well as council employees and their families. A couple of businesses from Devon and Cornwall gave prizes too. Early Years Lead for Dorset Council, Liz Curtis-Jones, co-ordinated the fundraising.

*Local businesses that donated include:*

- Keyneston Mill
- Belle Modelle, Dorchester
- Finca Coffee, Dorchester
- Posh Pupz, Dorchester
- Waitrose, Dorchester
- Dorset Nectar Cider, Bridport
- The Parlour, Burton Bradstock
- Feed the Soul Café, Dorchester
- Swanage Steam Railway
- Hall & Woodhouse, Dorchester
- Book & Bucket Cheese Company, Wimborne
- Crafting for a Cause, Poundbury
- Calm Necessities, Wareham
- The Pet Experience, Weymouth
- Conker Gin, Bournemouth
- Baboo Gelato, Bridport
- Fordington Gin, Dorchester
- Sculptures by the Lakes, Dorchester
- Ringwood Brewery
- Loco Loves, Dorchester
- Abbotsbury Swannery
- Bovington Tank Museum
- Shire Hall Museum, Dorchester
- Wey Valley Health and Fitness
- Beth Wood Artist, Blandford
- Camp Bestival
- John Davey, Artist
- End of the Road Festival

**COVID-19 - Family Matters  
How Have Things Changed?**

COVID19 and the lockdowns have left many people feeling adrift in their relationships and have sadly led to an increase of incidents of domestic violence. The good news is that we are still able to help you with any and all family matters during this time and have dedicated practitioners working within the team.

You may wish to undertake mediation in the first instance to see if matters can be agreed between you and your spouse or partner. Mediators are still working and this

can be done remotely via Zoom. Thanks to the technology we now have, the same benefits of mediation such as separate rooms, individual or joint mediation, or family mediation can be accessed without putting yourself at risk. There are some circumstances in which mediation is not suitable; however, attending mediation can help keep the relationship more amicable. A less contentious divorce or separation can be much easier in situations where there are children, for example. Mediation is a voluntary process and neither party can be forced to attend. However, mediation is usually a mandatory step before any Court proceedings can be issued. We can advise you fully in respect of mediation and its appropriateness.

If mediation is not suitable, or fails, we are now taking instruction mainly via telephone or remotely for example via Zoom. We can arrange a telephone call or virtual meeting whenever is convenient for you and give you the necessary advice.

All documents and bundles for filing with the Court are now often being filed electronically. This prevents multiple people handling documents. We may therefore be sending you more emails with documents to be electronically approved. We will take your email address at the outset to ensure we can send everything we need to you promptly and safely.

The main difference to how proceedings are now managed is the use of remote Court hearings. The Court is providing both telephone and video link hearings. Usually, you would have to attend court in person alongside your solicitor and the other parties. However, during the pandemic, Courts are now using the BT MeetMe telephone conference service, Microsoft Teams, Skype and other video conferencing software. These new methods of conducting Hearings are easy to use and do not require additional software aside from a smart phone for video conferences or any phone number for BT MeetMe. At the outset of the Court Hearing, you will be reminded that recording the Hearing is a criminal offence and that it is essential you are alone in a private location for the duration of the call. Once this formality has been covered, the process is the same as in pre-COVID times, and your solicitor can represent you.

There is currently a backlog in Court cases due to the increased demand and staff absence. However, Courts are still running and dealing with as much as they can manage but there are delays in getting Court Hearings and paperwork being dealt with by the Court. Whilst this may mean any proceedings take a little longer than usual, we are still able to offer the full range of assistance and services as we could at any other time.

If you need any assistance in relation to any family matters, please be confident that our team can assist you fully – the processes may be slightly different in these difficult times – however we can still progress matters on your behalf. For more information and advice, contact Tracey Parsons on 01305 216209 or [tracey.parsons@battens.co.uk](mailto:tracey.parsons@battens.co.uk)



Offices in Wareham, Dorchester, Yeovil, Sherborne,  
Castle Cary, Bath and London

**01929 768720**

- PC and Laptop support & repair
- Virus removal and prevention
- Internet setup (wireless/wired)
- Microsoft Windows issues resolved
- Computer hardware sales & upgrade
- PC Health & security checks
- Data recovery & backup
- 1-2-1 Tuition



Call Pete on:

**01929 421989****or 07900 992110**Email: [info@whizzbits.co.uk](mailto:info@whizzbits.co.uk)  
[www.whizzbits.co.uk](http://www.whizzbits.co.uk)



ELLIS  
JONES  
SOLICITORS

# Legal advice for tomorrow. Today.

We are a leading regional law firm with offices across the  
South Coast and London.

Call us on 01202 525333

[ellisjones.co.uk](http://ellisjones.co.uk)

Bournemouth | Canford Cliffs | Ringwood | Swanage | Wimborne | London

## Redmayne Bentley To Fund 145 Samaritan Volunteers

**O**n 5th December 2020, Redmayne Bentley celebrated its 145-year anniversary. The anniversary has fallen on International Volunteer Day, and in light of the struggles many are facing due to Covid-19, the investment management firm is to fund the training and support of 145 Samaritans volunteers.

Stephen Wolstenhulme, Head of Office and Investment Manager at the Bournemouth/Poole office located on Commercial road, said: "Over the years we have celebrated the firm's heritage, as we are doing today, but importantly this year we want to recognise that 2020 has been an extremely difficult and challenging year for many people, organisations and charities. We have chosen to support the Samaritans as they offer support for anyone who's in need, whenever they need it.

More than ever this year, we have been mindful of the importance of positive mental wellbeing for our colleagues, our clients and their families and our wider community, and our main focus during this pandemic has been the safety and wellbeing of our teams, clients and their loved ones. We may not currently be able to meet one another face to face, but thanks to modern technology we are able to keep connected, collaborate, and check in on each other.

Reflecting on the current pandemic and the firm's 145-year milestone, Wolstenhulme continued: "We are fortunate that we have been able to adapt to the pandemic with relative ease and continue to maintain the delivery of high standards of client service - which was set out by the firm's founder from all those years ago, and continues to set us apart from our competitors.

The Bournemouth/Poole office was established in October 2008, being the amalgamation of the Poole, Weymouth and Bournemouth offices. The team comprises of Stephen Wolstenhulme, David Cake, Piers Cockey, James Croad, Charles Goodall, Steven Jeffery, Jamie Lavender, Kate Spurling and Oliver Kent, who combined bring over 100 years of investment experience.

Sam Gale, Corporate Account Manager for the Samaritans said: "Thank you so much to everyone at Redmayne Bentley for this wonderful donation. Your support is more important than ever. These uncertain, challenging times have been affecting everyone's mental health and Samaritans have been providing emotional support round the clock.

Since the pandemic began, we have been providing support over 7,000

times a day to people struggling with issues such as loneliness, domestic violence, money worries, unemployment and anxiety. The donation will enable us to continue to be there round the clock for anyone struggling to cope."

*The Redmayne Bentley Story* - In 1875, John Redmayne set up the foundations of a business which is now one of the UK's largest independently owned investment management firms. From the beginning, John Redmayne had a simple aim: to deliver a first-class service to all clients. Much has happened in the intervening 145 years, including two World wars, the Great Depression plus many other challenging economic and market events including the Covid-19 shocks of 2020. However, the firm's unwavering focus on providing excellent client care and a personal service have remained a central thread throughout the years.

Over the last twenty years the firm has been presented with over fifty customer service accolades from prestigious industry awards including the Investors Chronicle and Financial Times Investment and Wealth Management Awards and the City of London Wealth Management Awards.

## TALK TO US

any time you like, in your own way,  
about whatever's getting to you

CALL: 116 123 (FREE)

EMAIL: [jo@samaritans.org](mailto:jo@samaritans.org)

WEB: [samaritans.org](http://samaritans.org)

VISIT US: find your  
nearest branch on  
our website

**SAMARITANS**

A registered charity



# Motoring

## Continued Free Parking For NHS Workers

Following extensive discussion by Councillors, Dorset Council has revised the proposed changes to car parking arrangements. After notice was provided to Town and Parish Councils of the proposed changes in mid-October, many people voiced their concerns, especially considering the current financial pressures faced by businesses and regarding the introduction of charges up until 8pm.

The recommendations as they were agreed are: -

- Implementation of Sunday charging. This recommendation stays as before, but Town and Parish Councils can ask for free days for special events.
- Extend morning charges in Purbeck to begin at 8am. This stays as was recommended.

The original recommendation to extend evening charges to 8pm has been withdrawn.

The changes will come into effect on 1 February. Further changes to car parking arrangements – including resident and shoppers permits – will also be discussed in the new year.

Current free parking arrangements for NHS and Care Workers will remain in place until midnight on Thursday 31 December.

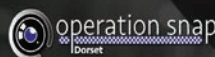
Originally run for a limited time earlier this year but reinstated during the most recent lockdown period, Dorset Council is offering continued free parking for NHS and Care Workers throughout December 2020.

Provided they are on duty and displaying a relevant permit, or they have registered with Dorset Council, NHS and Care Workers can continue to use any Dorset Council-operated off-street car park free of charge until the end of 31 December 2020.

## Captured a driving offence on your dashcam or other device?

You can send your video or photos to us and help to keep our roads safe

[www.dorset.police.uk/opsnap](http://www.dorset.police.uk/opsnap)



## Greystone Garage

- ✓ SERVICING & REPAIRS
- ✓ MOT'S CLASS 4
- ✓ TYRES

TEL: 01929 427775

[WWW.GREYSTONEGARAGE.CO.UK](http://WWW.GREYSTONEGARAGE.CO.UK)



## ST MICHAELS GARAGE

"THE PURBECK FORD CENTRE"  
Valley Road, Swanage  
tel: 01929 480221

2019 (10) Ford Focus 2.0 EcoBlue Tdci Vignale Est, 5dr, Diesel, Automatic, in Dark Mulberry, Panoramic Roof, Blind Spot Information System, Drivers Assistance Pack (Adaptive Cruise Control Traffic Sign Recognition; Auto High Beam; Adaptive Cruise Control (with Lane Centring Assist & Stop & Go on, Many Extras, 11,200 miles.....£18,495

2020 (20) Ford EcoSport Titanium 1.0 EcoBoost 125Ps, 5dr, in blue (tinting, petrol, manual, Sync3 Navigation with 8-inch Touch Screen, Cruise Control and Speed Limiter, Rear Parking Sensors, Electrically Adjustable and Heated Door Mirrors, Alloy Wheels.....£16,995

2018 (68) Ford Fiesta Zetec 1.0 100Ps EcoBoost, 5dr Hatchback in Race Red, Drivers Assistance Pack, Hill Start Assist, LED Daytime Running Lights, Rear Parking Camera & Sensors, Air Conditioning, Anti-lock Brake System with Brake Assist, Adaptive Cruise control and Speed Limiter, 19000 miles.....£10,495

2017 (66) Ford KA+ Zetec 1.2 85Ps, 5dr Hatchback in Oxford White, Air Conditioning, PAS, ABS, Remote Central Locking, Electric Windows, Service History, One Owner, CD Player, Bluetooth, Hill Start Assist, City Pack, Electrically Adjustable Folding and Heated Door Mirrors, Rear Parking Sensors, 30468 miles.....£6,995

See all our stock at

[www.stmichaelsgarageswanage.co.uk](http://www.stmichaelsgarageswanage.co.uk)

"Motoring Locally since the 60s"



## foleys

Vauxhall & German Automotive Specialists

Valley Road, Swanage, BH19 3DZ (Harman's Cross)

Tel: 01929 480215. Email: [info@foleysgarage.co.uk](mailto:info@foleysgarage.co.uk)

2017 (17) Ford Fiesta Zetec 1.0 Ecoboost 5dr in white, Air Cond, Bluetooth, Electric Windows & Mirrors, Sync 2, Alloys, Radio/CD, 20000 miles .....£8,995

2016 (16) Vauxhall Viva SL 10, 5dr, in Light Blue, Leather Interior, Cruise Control, Climate Control, Electric Front Windows, Electric Mirrors, FSH, 15000 miles and only £20 a year Tax .....£6595

2013 (13) Renault Clio 1.2 16v Dynamique Medianav, 5dr in red, Sat Nav, Cruise Control, Bluetooth, USB Connect, Auto Headlights, Auto Wipers, Electric Front Windows, Electric Mirrors, 68000 miles.....£5395

2016 (16) Ford Focus Zetec 1.0 Ecoboost (125ps) in Met Grey, Sat Nav, Electric Windows, Bluetooth, DAB Radio, Start/Stop, Only 36000 miles and £20 per year tax, FSH.....£8895

2014 (64) Ford Fiesta Zetec 1.0 Ecoboost 5dr in Met Blue, Air Con, Electric Front Windows, Electric Folding Mirrors, Rear Parking Sensors, Alloys, Heated Front Screen, Only 23500 miles and £0 Road Fund Licence, FS.....£7995

2016 (66) Vauxhall Mokka 1.4T Exclusive 5Dr in Blue, Climate Control, Cruise Control, Bluetooth, Electric Windows, Electric Heated and Folding Mirrors, Auto Headlights, Front and Rear Parking Sensors, 44000 miles, FSH.....£8295

We would like to wish all our customers a very happy and prosperous New Year!



# From The Kitchen Garden...



## Perfect Purbeck Pickle

By Regula  
Wright,  
Godlingston  
Manor Kitchen  
Garden

**F**irstly, I'd like to wish all my readers a happy and a healthy New Year! Surely, I can't be the only one thinking the last year has flown by and yet I couldn't wait to say goodbye to 2020?

Nevertheless, my customers (perhaps because of Covid-19) increasingly appreciate the time and effort it takes to grow seasonal fruit and vegetables and have really been making the connection between the soil and their food. To me this is great news and many people started to have a go growing their own produce and understand the value of growing food. This, I find brilliant!

My focus is now firmly on the new growing season which has started with planting garlic last autumn and then just recently with sowing red and white onions as well as banana shallots into seed trays. Some of the late crops I leave in the ground to go to flower, so on a mild winter's day there's still a bit of food to be found for a foraging insect.

My intention with Godlingston Manor Kitchen Garden is growing seasonal, spray free, open pollinated produce for my local community who appreciate fresh, tasty and perhaps unconventional fruit and vegetables. With this in mind, the Kitchen Garden includes a flock of chickens as well as a gaggle of geese and a team of ducks. They're all very important in the great scheme of things, including pest control, as well as gobbling up left over veg before it all gets composted. Of course, the very tasty and wholesome eggs produced are very much appreciated too...

This takes me smoothly to the next subject close to my heart - lovely, crumbly, dark, sweet-smelling compost. My attention will be very much on the soil and the ways of keeping it healthy and nutrient dense without the addition of any chemical fertilizers. This means my compost bays have to increase in size, so they need to re-locate to a different spot and with that, a whole new project starts to emerge.

Don't get me wrong, this is the right time of the year when I can actually get a bigish scheme like that planned and executed. No planting out, weeding, watering, thinning, picking, packing or delivering to be done - just the odd seed tray to be sown...

This is all part of the work that goes into nine months before the food hits the plate. However, the days are still short and I'm forever running out of daylight. I'm sooo looking forward to the days getting longer!

While the biggest part of the growing plots is resting under a thick mulch, or is covered with a green manure, there is still the odd row of winter roots to be had. This time I'm pulling the September sown beetroots - small yet ever so welcome to cheer up a winter dish with a bit of colour and lots of zing!

Actually, they offer quite a lot of flavour, as the baby beets are perfect for pickling. These pickles are delicious with rich cheeses, smoked salmon or a warm winter salad of roasted pheasant. This recipe is for a small batch and makes roughly four portions of pickled beetroot.

### Ingredients:

- 4 cloves
- 2 bay leaves
- 4 pepper corns
- 1 kg beetroots
- 1 red onion
- 400 ml red wine vinegar
- 200 ml water

### Method:

- Wash the beetroots and put into a pan of boiling water, cook until soft
- pour away the cooking water and quickly stop the cooking process by cooling down the beetroots under a cold tap.
- once they're cool enough to handle, peel the beetroots and set aside
- in a different pan mix the water and vinegar, add the peeled and halved onion, bay leaves, pepper corns and cloves and bring to a gentle boil.
- pack the beetroots into clean and sterilized glass jars and fill right up to the brim with the spiced vinegar mix so the beets are completely covered with liquid.
- screw the lids on the jars, then place them into a big pan with gently boiling water and leave to sterilize for about 30 minutes.
- carefully remove the jars from the pan and leave aside to cool down.

Godlingston Manor



Kitchen Garden

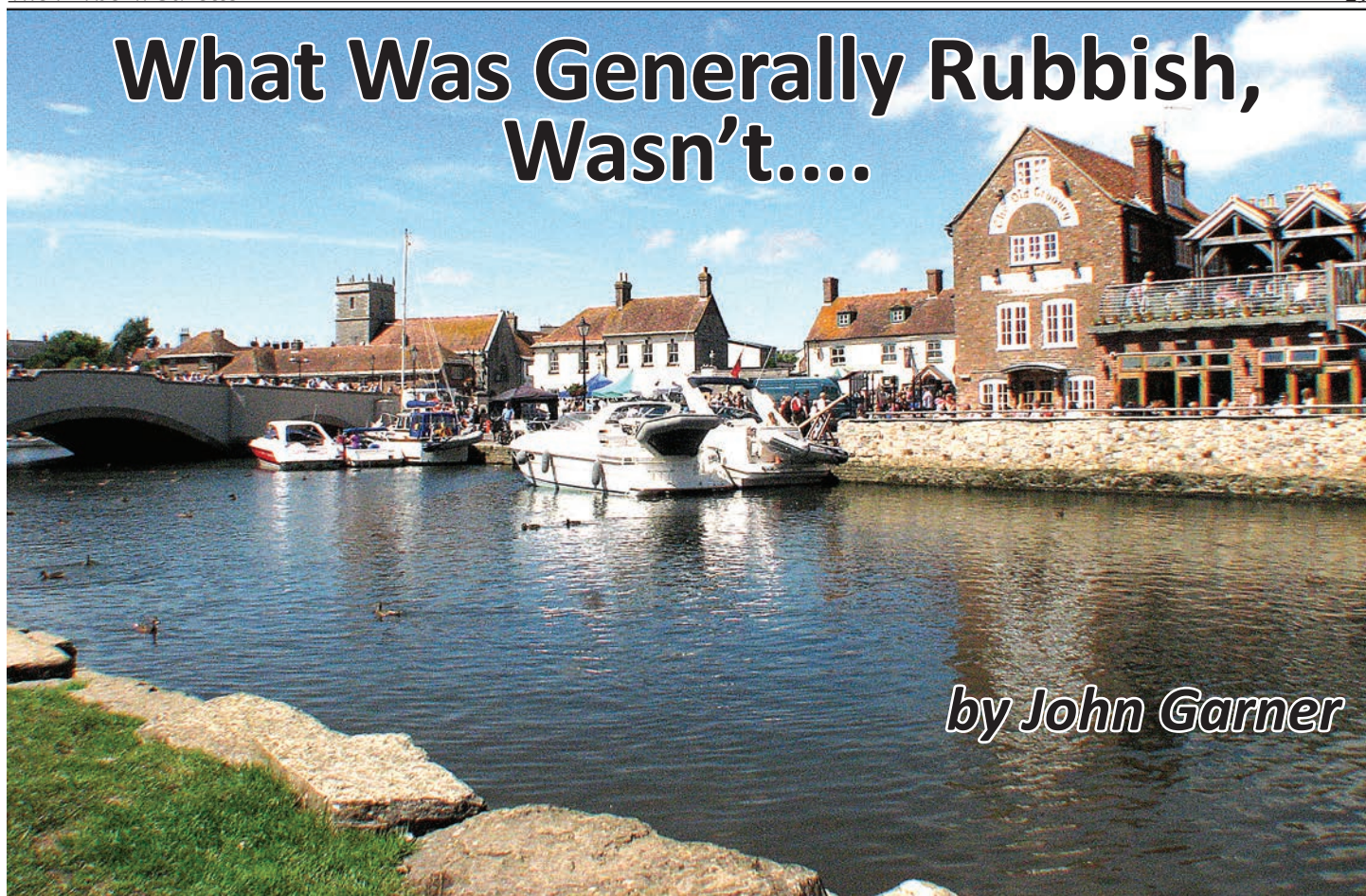
Seasonal, freshly-picked fruit,  
vegetables, herbs & cut flowers

...grown on your doorstep...

For more information,  
contact Regula Wright on 07758 013230  
regula@talktalk.net



# What Was Generally Rubbish, Wasn't....



*by John Garner*

**W**ell, that was generally rubbish wasn't it? 2020 that is. A really, really crap year. I doubt if anybody is feeling particularly sad that it's over. You can always find some things to be positive about in life and I'm a great believer and trying to do so to a point.

But honestly, the overriding sensation is one of phew - at least that's finished. I'm not even going to try to pick out some of the good points. It's done and let's be thankful for that. Let's just start again with a new year and pretend that the last one never happened.

I'm not going to review the old year or look at any resolutions for the new one as is often the case at this juncture in proceedings. It would, for example, have been very hard to have resolved the idea of seeing more of friends and family, or travelling more in a year such as the last. Whilst most resolutions are doomed to failure, if only for a lack of fortitude, last year threw up so many unsurmountable obstacles that to predict what may happen in 2021 would be, at best, ill advised. So, no resolutions, but maybe some areas for consideration.

I've decided that I'm going to try to make both my readers more aware of some of the more irritating aspects of our natural environment. How exciting, I hear you groan. Just what we want. Something else to moan about. Well maybe we should throw our attention and efforts into things that should and possibly can be changed. Let's face it, nothing we seem to say or do has much effect on the suits in London.

I thought I'd start with rivers.

In England just 4% of the inland waterways are accessible to the general public. We have 42,700 miles of rivers and only have access to 1400 miles of them. 96 miles out of a hundred are out of bounds. Can that be right? In Scotland, a place known for an abundance of inland water, you can access most of what is available. I can understand that hurtling up and down our rivers on a jet ski could be detrimental to the environment, but gently paddling upstream in a kayak or canoe is surely a different matter?

Some believe that there is actually already a public right of way on inland waterways for unpowered craft on all the navigable rivers in the country. The law appears to be as murky as some of the canals I grew up next to and it is suggested that this is to the benefit of those wishing to prevent people using these waterways.

A wider glance around the globe shows that we stack up very poorly against most of our immediate neighbours, along with what we used to call our European friends. France, Sweden, Norway, Bulgaria, Hungary, Finland and Belgium allow far greater public access to their waterways than we do. Further afield, the USA, Canada, New Zealand and Australia all offer much greater freedom of movement.

So why is this? If you paddle a canoe or kayak for example, why are so

many rivers inaccessible? Well basically (it's never basic is it? In fact, I might have to check the meaning of the word basically before using it again in this or a similar context), the owner of the riverbank is also the owner of the riverbed. Of course, anyone with a vested interest would say that you cannot own the water that flows over the riverbed and here the debate becomes a bit tasty. Anglers and canoeists seem not to get on very well although there doesn't seem to be any evidence to suggest that paddling through fishing areas has any effect on the fish or their livelihoods.

Many kayakers will have stories of being threatened by landowners or fishermen and there are accounts of fishermen receiving similar behaviours from kayakers. I have only anecdotal and internet researched evidence to recount on these incidents, none of which can be objectively verified, so I can only assume that some of them are true. But 4% access does strike me as somewhat unbalanced, especially given that most of the kayakers I have met in my short time paddling, are very appreciative of the environment.

In fact, it is the appeal of the environment that is so much part of the activity. I have yet to come across a kayaker playing Death Metal at ear melting decibels from his or her kayak whilst glugging cheap lager, tossing the empty cans over the side and pouring dangerous chemicals into the water just for the hell of it. If that person is reading this (and God knows that would have to rate as about as likely as finding a Brexit negotiator with a solution) then please stay away. There are some things that we can tolerate, but Death Metal...

You may want to get involved with a fairer access charity or sign a petition. You may want to ignore and discard any of the information mentioned in this article. You may well by now be snoring away in your favourite seat.

I consider all these responses to be equally valid and in the case of the last one, highly likely. But whatever you do, enjoy what limited access we do have to our rivers and treat them responsibly, Yes you Death Metal, lager-glugging chemical man.



## Holme Sawmill

Producers of Quality English Timber & Timber Products

**Seasoned Hardwood Logs & Kindling**

A wide range of timber in stock,  
we can cut & produce to your specifications.

We specialise in beautifully crafted bespoke timber products

**Tel: 01929 552480 Email: holmesawmill@yahoo.co.uk**



# DURLSTON

COUNTRY PARK & NATIONAL NATURE RESERVE



**J**anuary can be a time when there are fresh signs of new growth despite it still being winter. In the coastal woodland, shoots of Snowdrops, Spring Crocus, Jack-in-the-Pulpit, Lords & Ladies and Three-Cornered Leek emerge through the soil. Before the month expires Daffodils will bloom outside the castle. Upon the verges of Solent Road Wood, Forget Me Not and Hairy Violets are flowering.

**We will be checking the cattle water troughs and deterring them from freezing over. Keep your eye on your ponds and bird baths too!** Despite the occasional freezes we still see Smooth Newts in the wildlife pond this month. Berries are still available for the birds including European Spindle's bright pink compound fruits. Cherry Laurel is splendid, with bright red baubles, while Snowberry has round white globules.

Guillemots and Razorbills have started to return to the breeding ledges, while Fulmars are soaring around the cliffs. Meanwhile, **flocks of small birds foraging through the woods may include:** Blue, Great, Marsh and Coal Tits, Treecreepers, Goldcrests and Chiffchaffs. A warm day may bring out a Brimstone or Small Tortoiseshell butterfly, perhaps even an Adder.

Remember, Durlston Castle Shop is an excellent place to spend your Christmas money on Dorset produce or perhaps a new pair of

**binoculars! Durlston Castle's Winter opening hours are 10:30 until 16:00. Seventhwave will be serving from 10:00 until 15:30.**

From Friday 15<sup>th</sup> January we host the "Unmasked" exhibition in the Fine Foundation Gallery. Unmasked is a collaboration between photographer Andy Scaysbrook and journalist Emma Pittard. They reveal and celebrate the faces of health workers fighting the battle against Covid-19 in Dorset. Twenty-eight portraits tell stories from all areas of healthcare, from maintenance staff to management. **The project will also serve as an historical document, a first-hand record of the heroic roles played by ordinary people in extraordinary times.** Supported by Arts in Hospital at Dorset County Hospital Foundation Trust.

**We are required to undertake track and trace for visitors entering the castle.** If you have the NHS Test & Trace Covid 19 app, then you can scan our venue QR code. Visitors need to wear face coverings (unless they are exempt for health reasons and when dining) when they are inside the building. If you are coming up to eat, it may be worth booking your table just to be sure:

(01929 421111) [seventhwavereastaurant@gmail.com](mailto:seventhwavereastaurant@gmail.com).

For further information visit: <https://www.durlston.co.uk/>

## Public Warning In Relation To Deer And Hare Coursing At Dorset Farms

**D**orset Police's Rural Crime Team is asking the public for increased vigilance as criminal gangs involved in coursing target farms in the Dorset countryside. Coursing is the illegal activity of using dogs acting on sight to chase animals such as the brown hare and deer. While the activity is considered a hobby for those involved, large sums of money, often linked to organised crime, are used for betting on the dogs used. Sight dogs favoured include Lurchers and Salukis which, like greyhounds, have good sight and speed for chasing.

The highest number of incidents of hare coursing in the county occur in north east Dorset, where there are pockets of brown hare in their favoured habitat of arable fields. To flush out hares, offenders will walk across a field, perhaps spacing out trying to locate and bolt hares, then release dogs on the hare. They will often use their vehicles to drive across the field, releasing dogs from moving vehicles. They frequently commit damage not only to the soil or seeded crops, but also to gates, hedgerows and fencing.

Farmers have reported being threatened and intimidated by these individuals and they can leave livestock gates open on purpose. Other crimes this year included criminals driving their vehicles in to sheep grazing. These criminals also will go deer coursing, often at night to stun the deer by use of lamps or headlights, then chase the deer and ram into them with their vehicles. Dogs can be released on exhausted deer.

The type of dogs used means that the deer's death is not usually instantaneous. No regard is shown to the wildlife they terrorise or the surrounding habitat they damage. The deer are often left in situ or some heads are taken as trophies. Some take a supply to feed their coursing dogs on. No regard is shown for pregnant deer or those with dependant young.

A recent deer coursing incident occurred overnight on Friday 27 November 2020 in fields close to the Christchurch Bypass. The female deer was bitten, dragged along with bungee cords attached and then dumped. Offenders will also target the local fields and roads for gamebirds, especially just before dusk or dawn, using catapults fired from their cars to make a quick getaway. The dogs themselves are often kept in dirty kennels with bare concrete or wooden floors and minimal adherence to the Animal Welfare Act 2006. Dogs that tire or do not perform well are dumped, as any cursory search of dog rescue centres show.

Police Constable Claire Dinsdale, of the Rural Crime Team, said: "The individuals known for this are also often known for theft, burglary, assaults

and domestic abuse offences, as well as fraud on elderly or vulnerable people. Coursing however is their favourite pastime, which their crimes can help fund. They are cowards who travel in groups and make threats against our hard-working rural communities. Anyone suffering from these crimes must report it to us and can do so in absolute confidence.

"Local residents, cyclists, horse riders and motorists are asked to call 999 for any suspected hare or deer coursing in progress. It can be day or night, with incidents increasing from autumn to winter. We would also encourage people to report any vehicles or people on foot with their dogs acting suspiciously in country lanes, laybys and fields for these purposes. Vehicles can be older style 4x4s or cars. The type of dog is distinctive too - most commonly a Lurcher or Saluki type.

"Hotspot areas for coursing include the Cranborne Chase area of Dorset on the Wiltshire and Hampshire border and either side of the A354 from Blandford, up past Sixpenny Handley into Wiltshire, as well as various back roads off the A354. Deer coursing hotspots include the rural land around Burton and Christchurch as well as areas around Dorchester such as West Knighton, West Stafford, Bincombe, Crossways, Owemoigne, Wool, Lulworth, Lytchett and Wareham. Consider filming them if safe to do so and they are unaware, and capture vehicle registrations. Dorset Police will take robust action using a variety of legislation and other tactics.

"Dorset Police is part of Operation Galileo, a national police operation to tackle hare coursing in collaboration with partners such as the BASC (British Association for Shooting and Conservation), NFU (National Farmers' Union), CLA (Country Land and Business Association) and RSPCA (Royal Society for the Prevention of Cruelty to Animals).

"Police will seize vehicles and dogs and seek criminal behaviour orders at court that prevent the offenders from travelling to rural areas or owning or even travelling in a car with such dogs. If any signs of coursing or poaching are discovered after the offenders have gone, please report promptly using 101@dorset.pnn.police.uk or visiting Dorset Police Do It Online here: <https://www.dorset.police.uk/do-it-online/>.

"Dorset Police neighbourhood teams and the Rural Crime Team can advise on prevention measures that can be put in place and we would advise those not already signed up to Farmwatch, Horse Watch or Rural Watch, to do so by visiting <https://www.dorsetalert.co.uk/>. To find out more about wildlife crime please visit <https://www.nwcu.police.uk/>





NEW YEAR SALE - 15% OFF\* ALL STOVES 11/01/2021 - 28/02/2021

\*exclusions may apply - contact us for full T's & C's

**fire BY DESIGN**  
WOOD | MULTIFUEL | GAS | ELECTRIC

**FIND OUR SHOWROOMS**  
13A & 13D  
RIVERSIDE PARK  
WIMBORNE, BH21 1QU

**CONTACT US**  
01202 888561  
WWW.FIREBYDESIGN.CO.UK  
INFO@FIREBYDESIGN.CO.UK

**SALE**

## A Fantastic Way To Fundraise!



**H**ow about this for a super simple and great way to fundraise for rescue animals?

Did you know that you can set up a Facebook Birthday Fundraiser to support Margaret Green Animal Rescue and raise much needed funds to care for over 1,200 animals a year?

If you have a Facebook profile and have entered your birth date, a few weeks before your big day you will receive a notification inviting you to set up a Birthday fundraiser in support of a charity of your choice.

Once you have set it up, share with friends and family inviting them to donate in lieu of gift buying for you. You don't have to wait until your birthday as if you have an idea for a fundraiser and would like to support MGAR you can set one up here: <https://bit.ly/3mInMcT>

Fundraising in this way can be highly successful and the charity really appreciates the efforts of supporters who do so. All money raised goes to the rescue animals.

Get involved – it really does make a difference!

[www.margaretgreenanimalrescue.org.uk](http://www.margaretgreenanimalrescue.org.uk)



**Margaret Green  
Animal Rescue**

**Dorset's best  
kept *Secret***

[margaretgreenanimalrescue.org.uk](http://margaretgreenanimalrescue.org.uk)

Church Knowle  
Rehoming &  
Visitor Centre,  
Wareham  
BH20 5NQ  
t: 01929 480474  
Registered Charity No: 1167990






## Holme for Gardens

- Your Local **Garden Centre** with knowledgeable staff
- Large **Purbeck Farm Shop** with Local Produce at its best
- The **Orchard Café** with delicious Holme-made cakes, cream teas & lunches

**Join us in the Orchard Cafe - it's time to mingle again!**

**NEW YEAR • NEW HOPE • NEW MENU**



**Thank you for keeping it Local!**

 Holme Nurseries Ltd, West Holme Farm, Wareham, Dorset. BH20 6AQ - 3 miles from Wareham  
 office@holmeforgardens.co.uk | www.holmeforgardens.co.uk | 01929 554716
 


# Gazette Gardening

## with Simon Goldsack



### Would you like a great Career in Horticulture?

**Y**ou are probably reading this article because you are already keen on gardening, but what if you could turn your passion into a career?

I started working in horticulture in 1986 and have loved every minute of it and thirty-four years later I still feel the same. One never gets bored because every day you learn something new.

As a garden designer or gardener, you can be very creative, as a grower you are giving new life and nurturing

young plants, as a botanist or ecologist you can lose yourself in research, as a landscaper you are building new features and problem solving. you keep naturally fit and healthy in the open air and you get to meet as many or as few people as you like depending on which path you follow. All these aspects lead to a very satisfying and rewarding career.

Sure, there are better paid callings, but they all come with a lot of stress, a bland working environment and often a long and boring daily commute.

All in all, I thoroughly commend horticulture and guess what, there has never been a better time to get into it and here are some reasons why:

- Many more people want a lovely garden and are prepared to pay others to do it for them
- The pound has weakened in the last four years so plant prices for UK growers have risen significantly.
- There are a shortage of gardeners, growers and landscapers and as a result, self-employed workers earn at least the average UK wage and if particularly skilled then significantly more.

If horticulture is so great, then why is there a shortage of workers?

I put it down to two things:-

Firstly, when I was at school those children that struggled academically were often advised to go into horticulture giving the impression to the more academically gifted that gardening was beneath them.

The second reason is Tony Blair's aspiration that 50% of youngsters should go to university whilst training for the trades such as building, carpentry, plumbing and gardening has been largely ignored. Consequently, many graduates struggle to find work, whereas the tradesmen are earning very nicely, thank you.

So, if you are looking for a new career or know a youngster who is struggling to get a job, I can thoroughly recommend horticulture.

If you would like further advice, take a look at what Kingston Maurward College are offering or visit: <https://www.rhs.org.uk/education-learning/qualifications-and-training/rhs-qualifications> or you can email me at: [simon@holmefg.co.uk](mailto:simon@holmefg.co.uk)

*Pictured: Top: Simon at Keukenhof Garden in Holland, left: you get to work in some lovely spaces!*



## Let's seize the moment...

- Support the health & well-being and life chances of Dorset's young people.
- Promote sustainable investment, boost jobs and skills.
- Help ensure a thriving future for our communities, environment and economy.
- Work with communities and councils to meet local housing needs.

The Government wants to create new National Parks. Dorset is the outstanding candidate.

Together we can secure the benefits of a National Park for all of Dorset.

Learn more at [www.dorsetnationalpark.com](http://www.dorsetnationalpark.com) and find us on Facebook

It's Time for Dorset's National Park



WE ♥  
DORSET  
NATIONAL PARK

## Dorset National Park Update



In late November, the Government said: "We will protect our natural environment through the creation of new National Parks and Areas of Outstanding Natural Beauty (AONBs). We will start the process for designating more of England's

beautiful and iconic landscapes as National Parks and AONBs, safeguarding these areas for future generations and bringing more people within closer reach of nature."

This was a welcome commitment given by the Government in its 10 Point Plan for a greener economic future.

The Glover Review recommended that Dorset be seriously evaluated for National Park designation and we look forward to Natural England progressing this compelling case.

The Dorset Council is consulting on their proposals to address the Climate and Ecological Emergencies. The consultation closes on January 20<sup>th</sup>. We encourage all communities and local councils to recognise in their responses that a Dorset National Park would bring additional funding, jobs and expertise and work in partnership with Dorset Council and communities to help address these emergencies. A National Park would help nature recover. It would help our communities, economy, environment and wildlife to thrive and support the health and well-being of everyone who lives or works in Dorset or visits this very special area. It's time for Dorset's National Park and a greener, healthier, prosperous future.

For more information on the benefits for Dorset's environment, communities and economy and to join us please see <https://www.dorsetnationalpark.com/> and find us on Facebook.

**A Happy New Year from all in the Dorset National Park Team!**

## Updates To Walking And Cycling Routes

**Dorset welcomes £438,000 grant from Department for Travel to improve walking and cycling**

We are delighted to announce that the Government's Department for Transport has awarded £438,000 to Dorset Council as part of the Active Travel Fund. This funding will be used for walking and cycling improvements across the county as we move towards a greener, cleaner Dorset.

**Summer survey of local residents** - Cllr Ray Bryan, Portfolio Holder for Highways, Travel and Environment, said: "Over the summer months, we heard ideas about where improvements could be made to support more walking and cycling. Thank you to the 1,000+ residents from across the county who responded! We reviewed all the ideas. We then spoke with local members and stakeholders (such as town councils) on the ideas that could be progressed relatively quickly (following a consultation period). We then analysed those ideas in more detail and initial feasibility design work was completed."

- 1,306 people submitted their views, 948 of whom were later verified to ensure views were not multiple responses from the same email address
- 899 comments were submitted in the Dorset Council area
- 4,379 agreements with these comments were made
- The wards with the highest number of comments were Melcombe Regis and Bridport (64 each)

The three main themes (accounting for 66% of comments) identified by residents and businesses were provision for cycling (434 comments), reduced speed of traffic (396 comments) and improved provision for walking (320 comments). Individual responses can be viewed here: <https://dorsetsafestreetsmap.commonplace.is/>

From this evidence, and in discussion with other key stakeholders, Dorset Council has identified a shortlist of high priority projects which can be implemented quickly and will deliver the biggest impact. Residents will be asked for their views on these ideas in a consultation which will launch shortly.



# Arts & Entertainment

## Sculptor, Michael Bizley, Takes His Final Journey



**M**ichael Bizley was a well-known sculptor living and working in Dorset. He worked as a mason during the building of Guildford Cathedral before studying at Guildford School of Art.

Michael worked mainly to commission – landscape and garden sculpture, interior pieces, architectural and restoration. The material for his carving was stone, marble, wood and terracotta. Michael's work is represented in public and private collections in Europe, USA, and Australia.

We are all very saddened to hear about Mike Bizley's recent death in November, and it's a pity that Sue and Mike did not have more time together since their retirement to their home in France. They lived at Spyway Barn Cottages in Langton Matravers for many years.

Michael was a great friend of sculptor Mary Spencer Watson, Tony Viney, Trevelyn Haysom, Ilay Cooper, Hugh Sandall, the Bonfield family – and many more stone masons and local quarrymen around Purbeck.

Mike was an inspiration and encouragement and help to emerging stone carvers and artists, as well as being an esteemed and meticulous local sculptor in wood, stone and bronze.

Mike was a tutor at The Old Malthouse School in Langton Matravers and gave much help and advice at Burngate Stone Carving Centre as a tutor and mentor from its inception in 2009, as well as taking part in many Purbeck Art Weeks.

The wooden tripod at the Square & Compass was masterminded and erected by Mike for the first Square Fair in 1991. Some of us remember the raucous singing in the corridor on Friday nights...

A great friend to many more people than mentioned, he will be sorely missed.

Ad Bibendum, Mike!

by **Diana Quinn**

### THE MOWLEM

JANUARY 2021

## MOWLEM MUSICAL MADNESS!

BACK BY POPULAR DEMAND!

**42nd Street**

Monday 11<sup>th</sup>  
2:30pm

LIVE ON STAGE!

**Richard Digance**

Friday 15<sup>th</sup>  
7:30pm

BACK BY POPULAR DEMAND!

**Kinky Boots**

Monday 18<sup>th</sup>  
2:30pm

**Matthew Bourne's  
The Car Man**

Friday 22<sup>nd</sup>  
7:30pm &  
Monday 25<sup>th</sup>  
2:30pm

**The Merry Wives  
of Windsor**

Friday 29<sup>th</sup>  
7:30pm &  
Monday 1<sup>st</sup> February  
2:30pm

**www.themowlem.com**

**0333 666 33 66** (standard rate)  
Line open Monday-Friday 9:00am - 5:00pm

**Box office open**  
Mondays - 10:30am - 1:30pm  
Fridays - 10:30am - 1:30pm  
Booking fees apply.

**PAW**

**PURBECK ART WEEKS Festival**

MAY 29th to JUNE 13th 2021

## APPLICATIONS

*To all visual artists who live or work in Purbeck*

If you would like to take part in the Purbeck Art Weeks Festival 2021, why not join us? To find out more and how to apply, please go to our website or contact us at [membership@purbeckartweeksfestival.co.uk](mailto:membership@purbeckartweeksfestival.co.uk).

**Closing date for applications is March 1st 2021.**

### BURSARIES

John Flower bursaries are available to help and encourage artists, of any discipline, to take the next step in the development of their career. If you would like to find out more and how to apply please contact [info@purbeckartweeksfestival.co.uk](mailto:info@purbeckartweeksfestival.co.uk).

**[www.purbeckartweeksfestival.co.uk](http://www.purbeckartweeksfestival.co.uk)**





## 'A Year In Lockdown' - By Mary Clutterbuck

We recently spotted a fabulous piece of artwork online by Mary Clutterbuck, entitled: 'A Year In Lockdown'. We contacted Mary and asked permission to publish her artwork in the Gazette for you all to enjoy - she very kindly agreed, so you are all able to see the rather brilliant depiction of 2020 which Mary has created, below.

We think it is a perfect representation of the year we've all been through! Prints and cards are available to purchase from The Purbeck New Wave Gallery in Swanage, or email: [cockshellsart@gmail.com](mailto:cockshellsart@gmail.com). *Image Copyright Mary Clutterbuck.*



## PAW Festival 2021: May 29 - June 13

Purbeck Art Weeks Festival is looking forward to being as 'live' as possible in 2021. We have a superb programme of concerts and talks lined up, and our artists are starting to plan their Open Studios and exhibitions.

'Renewal' is the theme for this year's PAW and we're hoping to offer our visitors, Covid-19 allowing, a range of inspiring art and creative activities to explore during the Festival fortnight. The Spring Dryad was one of three winning images from our theme competition, so look out for it on the front of our brochure.

If you are a practising or returning artist and feel ready to start showing your work, please do think about taking part in PAW this year. New exhibitors are welcome! The deadline for applications is March 1<sup>st</sup> and you will find all the information you need to know on our website at [www.purbeckartweeksfestival.co.uk](http://www.purbeckartweeksfestival.co.uk). PAW is a supportive community of artists who revel in creativity of all kinds - the more the merrier! If you think a PAW Bursary could help you take the next step in your career as a visual or performing artist, and you are over 16 years old, please let us know. You can email us at [info@purbeckartweeksfestival.co.uk](mailto:info@purbeckartweeksfestival.co.uk)

The PAW Festival team, our artists and our musicians, look forward to hearing from you and welcoming you into PAW - one way or another!



# Health & Beauty

## Matron's Round - Our Local Hospitals' Monthly Column



for which we are immensely grateful. We also thank Dorset HealthCare for taking the opportunity to replace boilers, upgrade gas and electric supplies and install PVCs on our roofs during the year.

With continuing concerns around Covid-19, community hospitals cannot have internal Christmas decorations this year and, once again, we are indebted to the Friends for providing a Christmas tree and external decorations that can be seen from each of our patient rooms. We'll be doing our best to ensure the festive season is as jolly as possible inside.

In Wareham, we're about to upgrade the dining room to allow the continuation of various exercise groups and are excited to host the Covid-19 vaccination programme. Larger spaces available at Wareham Hospital make it a great venue to safely deliver a thousand vaccinations a week and, by the time you read this, the programme may be well underway.

Happy New Year to you all and stay safe!

**Until next time, take care**

**Matron Donna**



**H**appy New Year everyone!  
What a year we've all had! I'm sure many of us are looking forward to starting a New Year, but here at Swanage Hospital we've had some significantly good things happen during 2020 that will make a difference to our patients and staff for many years to come.

Thanks to the donations you have given to the Friends of Swanage Hospital, we have been able to convert an unused space beneath the ward to provide a lovely relative's room, staff room and conference room.

The lawned area used for annual afternoon teas is now a therapeutic garden for patients and the Everest site is a car park for patients and visitors, with charging points for electric vehicles.

The majority of the planting will take place in spring when we will plant the verges of the car park with wildflowers and create a wildlife haven. A patient lift will enable relatives and carers to take patients down into the garden once the weather improves. This is an extraordinary achievement

**Swanage Hospital Minor Injuries Unit - Open 7 days a week from 8am - 8pm**

*If you have an injury, we're here to treat it!*

**Call us on 01929 422282. We're here for YOU, so use our services!**

### CHIROPODY

*Rachel Ciantar*

Registered with The College Podiatry & HPCP

#### Home Visits & Clinic Appointments

**Comprehensive foot care  
Diabetic Patient Care**

**2 Daisy May Arcade, King's Road East, Swanage  
Contact 07979 840542**

### SHIATSU

Japanese Acupressure Therapy

by

*Nichola Morgan*

B.A. Dip. Seitai Shiatsu (Japan)

For Wholeness & Wellbeing

**SWANAGE (01929) 427289**



### ARE YOU SUFFERING FROM PAIN OR DISCOMFORT?

We can help to heal your:

Back & neck pain..Sciatica..Tension..Headaches..Arthritic pain  
Frozen Shoulder..Sports Injuries..Muscle Strains..Repetitive Strains  
Poor Posture & much more

Practices based in Swanage & Wareham



**01929  
766008**

**Guy Ryder**  
Registered Osteopath

[www.purbeck-osteopathy.co.uk](http://www.purbeck-osteopathy.co.uk)

### Key to Hearing LTD

Home visit hearing care across Purbeck  
Call today to book your appointment

t: 01202 511386

e: [info@keytohearing.co.uk](mailto:info@keytohearing.co.uk)

w: [www.keytohearing.co.uk](http://www.keytohearing.co.uk)

Keeley Salmon RHAD MSHAA





## WAREHAM PHYSIOTHERAPY

HELEN GORDON, MCSP. HCPC registered

NOW BACK IN THE CLINIC!



Effective treatment from experienced chartered physiotherapists for spinal, limb, joint & muscle pain, sciatica, arthritic pain, whiplash, sports injuries & postural problems

**CONTACT: 07765 129786**

[www.warehamphysio.co.uk](http://www.warehamphysio.co.uk)

## Wareham Physiotherapy - Expanding Services



Kirsty Jesty



**W**areham Physiotherapy is expanding its services for 2021 to help you get your health on-track and achieve those goals. We provide a comprehensive physiotherapy service providing "hands on" therapy, acupuncture, exercise prescription, ultrasound and advice for all your spinal, joint and muscle pain, whiplash, sports injuries and postural problems.

Please go to [www.warehamphysio.co.uk](http://www.warehamphysio.co.uk) to see more about how our team of experienced chartered physiotherapists can help you or ring us for an appointment on 07765 129786.

We are now also introducing two new services at the clinic and the practitioners have introduced themselves and their services:

**Rosie Tamkin, Nutritional Therapist:** Did you know that many of today's common health concerns may be helped simply through a change in your diet?

With a one-to-one Zoom or telephone consultation with registered Nutritional Therapist Rosie Tamkin, you could be given a tailor-made programme to set you back on the road to good health and vitality. Please contact Rosie on 07752 629424 to book a free discovery call or visit [individualnutrition.co.uk](http://individualnutrition.co.uk) for more information.

**Kirsty Jesty, Chartered Physiotherapist:** specialising in women's health: Physiotherapist and experienced Pilates instructor Kirsty has a special interest in pelvic health Physiotherapy. She works with women of all ages to support them through exercise in managing their pelvic health, core stability and strength. Advice offered to pregnant women, as well as postnatal assessment and rehabilitation through the Mummy MOT.

**Please contact Kirsty for an appointment on 07793 205579 or go to [insideoutpilates.co.uk](http://insideoutpilates.co.uk) for more information.**

*Pictured above: Left: Kirsty Jesty, right, Rosie Tamkin*

## DEVELOPING ME, EMPOWERING YOU

A holistic life skills and mentoring programme  
Inspiring Personal and Spiritual Growth  
Through time of change

**DEVELOP** yourself: 8 weeks,  
one evening a week via Zoom

**EMPOWER** others: 8 weeks,  
one evening a week via Zoom

**FANTASTIC VALUE!** £37 per module  
Starting January 19th

**CONTACT:** for further information and booking form,  
Naomi Duffield: [naomi@swanageretreats.co.uk](mailto:naomi@swanageretreats.co.uk)  
01929 422562

Our teeth need healthy Gums  
to survive a Lifetime

Diseased Gums seriously affect our  
General Body Health, as well

**CHECK OUT YOUR GUM HEALTH SOON**



**FREE 30 minute Specialist Periodontics  
Consultation offered - if you mention  
this advert!**

deWaal Specialist Periodontics  
MouthPeace Dental in WOOL, Dorset.  
Tel: 01929 462269.

Email: [Wool@MouthPeace.com](mailto:Wool@MouthPeace.com)  
[www.Specialist-Periodontics.com](http://www.Specialist-Periodontics.com)

## West Dorset Mobile Foot Clinic

Nail Cutting, including Diabetic Feet, Cracked Heels, Fungal Infections,  
Corns, Calluses, Medical Pedicures, Warm Wax Therapy, (For Foot & Joint Pain).

07903 722542 Roy Fox

07712 525058 Christine Fox

[www.westdorsetmobilefootclinic.com](http://www.westdorsetmobilefootclinic.com)



## Purbeck Chiropractic

McTimoney Chiropractic is a gentle and effective treatment for the whole body

It is proven to be effective in treating the following conditions:

- Back, neck and shoulder pain
- Muscular aches
- Pain, discomfort & stiffness in joints
- Arthritic pain
- Sports injuries
- Migraine

Effective treatment by an experienced Registered Chiropractor  
for a wide range of musculoskeletal conditions

Paul Hind BSc (Hons) Chiro, MSc, MMCA, LRCC

For an informal discussion, call Paul on:

**07973 308829**

[www.purbeckchiropractic.com](http://www.purbeckchiropractic.com)



**JANUARY EDITION DEADLINE**

**NOON, Mon 9th December**

**EMAIL your copy to: [ed@purbeckgazette.co.uk](mailto:ed@purbeckgazette.co.uk)**



# Blast From The Past!

## This month, A Decade Ago...

Well, here we are, heading into 2021 already. To coin an overused phrase, time sure does fly! Our January 2011 front cover clearly declared that the Isle of Purbeck had been subjected to a beautiful covering of snow, with readers sending in a selection of stunning pictures of our isle glistening under a blanket of white.



We also featured Bob Campbell on our front cover, proudly sitting in his office upstairs at Marine Villas on Swanage Pier, with the 'National Historical Society Award' which he had been given for his efforts in furthering the interests of the society. Bob was a long-term, regular visitor to Gazette Towers - he loved animals and often popped in on his way past to have a cuddle with Bubs (pictured, left), one of our office dogs. Sadly, Bob is no longer with us, now living in our collective memory for all time.

Nico's 'Editor's note' that month was mainly focused on the recession we were in at that time - the government was advising all small businesses and self-employed people

to ensure all invoices issued were 'payable within ten days' to ensure cash flow continued and invoices were more likely to be paid as the recession bit deeper into the British economy. We survived that year and all the struggles which followed over the next decade and are still here to tell you about it today! Let's hope in another decade the story repeats and we're still here, serving our community...

In January 2011 we celebrated the Deputy Station Manager at Lulworth (Coastguard Service), Stephen Pack, accepting his MBE from the Queen at Buckingham Palace. Stephen had been with the Coastguard for thirty-three years, having joined at the age of eighteen. Stephen was involved with the tragic Coastguard operation when two local Lulworth boys sadly drowned in 2005. John Myburgh, father of one of the boys lost, kindly provided the images we published of Ian with his MBE and of the party who had attended the palace with him that day.

The January 2011 edition was full to bursting with awards being given - from Bob's Historical Society award and Stephen's MBE to Mike Dimarco, who was awarded the Gazette 'Community Star' award by David Hollister in December 2010 (both pictured left). Mike was awarded the Community Star for his continued voluntary work which was considered to go above and beyond.



Mike had, for years, assisted in erecting Swanage's Christmas lights, usually in absolutely terrible weather, as well as being instrumental in helping with Swanage Regatta & Carnival, Harmans Cross Fete and far too many more community events

to list. Mike was nominated by Harmans Cross Village Hall Committee, Swanage Carnival, Swanage Lifeboat, Switch on Swanage and Swanage & Purbeck Rotary Club.

The Gazette team had been working on a 'community cohesion' project throughout 2010 and into 2011, which involved working with various community partners, groups and official bodies to try and ensure the Purbeck community worked together in a spirit of openness, sharing information and working together in a more cohesive manner.

We had been working extremely closely with our Safer Neighbourhood Police Team and were delighted in January 2011 when the Swanage Pub Watch team linked up with the SNT/PACT Police team to engage in open dialogue for the good of all. We hoped this new working relationship would support both the Pub Watch members and our local police force to deal with issues as they arose in a coordinated manner. Sadly, we have to report that relations with the local police seem to be at an all time low - the enormous time, effort and openness brought forth by previous leaders of the local police team has evaporated. Budget cuts? Changes at the top? Who knows. Other than Karl kindly penning the 'Out of the

**The Purbeck Gazette**  
January 2011 Issue no. 132  
20,000 Copies: Swanage to Dorchester, Lulworth to Bere Regis

POLICE NEWS updates online at: [www.purbeckgazette.co.uk](http://www.purbeckgazette.co.uk)

**Your Pictures Of The Snow! Page 18**

**Bob Campbell Receives Award. Page 26**

**Local Coastguard Receives MBE. Page 21**

**Please Save Our Kennels! Page 37**

**FUJIFILM FILM & DIGITAL PRINTS**  
Hallmark  
**50 PRINTS FOR ONLY £5.00**  
Swanage Post Office, Kings Road, SWANAGE, BH19 1ER 01929 422 461

**Tawny's**  
FINE WINES, HEARTY FOOD, NIGHT & DAY, EVERY DAY  
ENQUIRIES & BOOKINGS 01929 422781  
52 HIGH STREET SWANAGE www.tawnywinebar.co.uk

**J.J. Taxis**  
4 and 6 seaters available  
Special rates for long distance journeys  
**01929 427755**  
Email: info@jjtaxis.biz

**Booking for Christmas**  
2 courses: £19.00  
3 courses: £25.00  
Call us now on 01929 422222  
<http://www.bayrestaurant.com>

Blue' police column each month to keep our readers updated there is no contact whatsoever - the regular meetings, information sharing and intelligence gathering has vanished into the mists of time, which can only be viewed as a failure. Sad news for all concerned - not least, the community.

Greendale Construction reported in January 2011 that work to renovate Durlston Castle was well underway. Where possible, materials were stored and reused as part of the restoration project and work was due to start on the exhibition space and terrace areas when we published. The East Keep had been cleared after years of being in a complete state and new stairs and a lift were designed ready for installation. Stone masons and specialist cleaners had been brought in to restore the existing stone walling and to rebuild where required. Today, in 2021, Durlston Castle is magnificent, a testament to all who worked tirelessly to bring this jewel in the Purbeckian crown back to its former glory. Well done to all!





# Spotlight Event Diary

Diary Entries are FREE if your event is FREE. If you charge, then it's £5 plus VAT per entry, per month. DEADLINE for FEB is noon, 11th JAN

KEY: \* = Start time not known or n/a; Ffi = for further information; Sw = Swanage; Wm = Wareham; VH = Village Hall, Telephone code 01929 unless otherwise stated.

## JANUARY 2021

# WEEKLY EVENTS

Please call prior to attending events listed to ensure they are still on!

### EVERY MONDAY

- 09.00 **U3A Table Tennis Group** meet at Harmans Cross VH.  
 09.30 **Under 2.5 years old group.** Till 11am. at Parish Hall, Wm.  
 09.45 **Toddler Club URC,** Sw. Till 11.15  
 10.00 **Table Tennis Club** Sw FC All ages/abilities £2.50 Till noon. 480093  
 10.30 **Flowers with Liz** at the Purbeck Workshop in Wool. The Workshop provides craft activities free of charge to those touched by cancer - friends and family are welcome too. Unit 6, Woolbridge Business Centre, East Burton Rd, Wool. BH20 6HG. www.purbeckworkshop.org 07757 776907. Email: richris95@gmail.com  
 13.00 **Play and Learn** at Wareham's Children's Centre, Streche Rd, Wm. Till 2.45pm  
 13.00 **Under 1s and Tums** at Chapel Lane, Swanage. Till 3pm  
 14.00 **Pins and Needles** at Harmans Cross VH.  
 14.00 **Swanage Digital Champions.** Support people in the community to use the internet and gain basic online skills. Booking essential on 01929 423485.  
 14.00 **Wareham Short Mat Bowls.** Meet at Furzebrook Village Hall. New members welcome to come along and meet us!  
 14.00 **Swanage Disabled Club** meet until 4pm. Meeting place alternates between Catholic Hall & Queensmead Hall, Sw. Transport available. Call Mrs Daphne Saville on 01929 425241 ffi.  
 16.00 **Colour Me Happy.** Adult colouring session at Swanage Library. Drop in.  
 16.45 **Soccer Skills** Sw FC First Sch chldn £1 Till 5.45. 425175  
 18.00 **Lesbian and Gay Friendship Group** meets every Monday evening for social events and shared interests, such as meals, walking and outings. Ffi: contact Karen via email: outinpurbeck@gmail.com  
 18.00 **Swanage Tennis Club** at Beach Gardens, Sw. Free Cardio Tennis taster. Till 7pm  
 18.00 **Swanage Tennis Club** at Beach Gardens, Sw. Free Matchplay taster session for prospective new members. First 3 sessions are free. Until 8.30pm.  
 19.00 **Wareham Choral Society** meet URC Meeting House, Church St, Wm. Till 9. New singers always welcome.  
 19.00 **Swanage Youth Club.** School year 10 and upwards. Till 9.30pm  
 19.00 **Whist.** Come & join us at the Reading Room, Church Hill, Swanage. Ffi, call 07984 968733  
 19.00 **Purbeck Chess Club.** Mortons House Hotel, Corfe Castle. Ffi, call Steve Peirson on 01929 552504.  
 19.30 **Purbeck Quire** rehearse at Wm Methodist Church. New/visiting singers (no audition necessary). String & wind players also welcome. Ffi: 423505 or 480737.  
 19.30 **Wareham Art Club Workshop** at Wareham Parish Hall. Ffi: 553718.  
 19.30 **Wm Folk Dance Club** Stoboro' VH. All welcome. 552763/551029  
 19.30 **Swanage Air Cadets** meet at Air Training Corps HQ, Court Road, Sw. Cadets age 12+. Ffi: email: oc.2185@aircadets.mod.  
 20.00 **DARTS** at the RBL Club, Sw.  
 20.00 **Herston Hall Management C'ttee Bingo**

### EVERY TUESDAY

- 09.00 **Swanage Tennis Club** at Beach Gardens, Sw. Free Cardio Tennis taster. Till 10am  
 09.30 **Isle of Purbeck Arts Club.** Painting and sketching. At the Catholic Church Hall, Rempstone Rd, Sw. Till 1pm. Outdoors in summer. Ffi: Gina on 421689.  
 09.30 **Well Baby Clinic** at Chapel Lane, Swanage. Till 11.30am.  
 09.30 **Kiddies Corner Mother & Toddler Group** (term time only) No fee - donations welcome. Purbeck Gateway Church. 551415  
 09.30 **Wareham Art Club Workshop** at Wareham Parish Hall. Ffi: 553718.  
 09.30 **First Steps Parent & Toddlers' Group.** Swanage Methodist Church till 11.30am during term time. Ffi: Sylvia Garrett 425420, office hours.  
 10.00 **Men & Women's Mixed Walking Football Club** at Swanage Football Club. Come and try! All levels welcome, even if you've never played before. Come and join in or just come along to watch a very friendly group of people playing football. Until 11.30am. Call Nick on: 07745 907509  
 10.00 **Swanage Tennis Club** at Beach Gardens, Sw. Free Matchplay taster session for prospective new members. First 3 sessions are free. Until 11.30am.  
 10.00 **Wareham Croquet Club** meet at the Recreation Ground until 5pm. New members and visitors welcome. Call Tony on 01929 550190 or Lesley on 01929 553927 or email warehamgolfcroquetclub@hotmail.com  
 10.00 **Sandford Toddlers** at Sandford Community Hall, till 11.30am.  
 10.00 **Short Tennis** at Sw FC All ages & abilities £1.50 Till noon. 425175  
 10.00 **A Place Of Welcome** at 21 Commercial Road, Sw. Friendly drop-in for everyone, providing a free cup of tea or coffee, a listening ear, conversation and basic information. Everyone welcome, whatever the circumstances.  
 10.20 **Adult Dance Classes.** Modern Line dance. Until 11.20am. At The D'Urberville Centre, Wool. Ffi: 01202 243803 or see: www.purbeckdancestudio.co.uk  
 10.30 **Employment Hub** at Swanage Library. Until 12.30pm. Book via Skilla dn Learning on 01202 262300.  
 10.30 **Swanage Walking for Health Group** starter walks (15-30mins). Start from the Mowlem Shelter on Swanage Seaford. Get back into the swing of things gently! Ffi: 481000  
 10.30 **Wareham Walkers.** Convivial health walks for mainly older people, of up to two

- hours in and around Wareham, ending with coffee at a local tea room or pub. Ffi: www.wareham-walkers.org.uk or call 552933.  
 12.00 **Nature Tots** (0-4yrs) at Bovington Memorial Hall Garden. Until 2pm.  
 14.00 **Wareham Short Mat Bowls.** Meet at Furzebrook Village Hall. New members welcome to come along and meet us!  
 14.00 **Swanage Walking for Health Group.** Walks of 60-90mins, various locations. Walks are very social, for a range of abilities. Walks start from car parks at Studland, Corfe, Arne, Durlston, Langton, Acton, Worth and Kingston. Ffi: 481000.  
 14.00 **Swanage Town Walk.** Local historian takes walks lasting 90 minutes. Meet outside the Museum in the 'Square'. No charge but voluntary contributions welcome.  
 14.00 **Harman's Cross Village Hall Art Group** Till 5  
 18.00 **Sw Youth Centre Girls' Night** (Yr 8+) Till 10  
 18.15 **Sw Cricket Club Practice** till 8.30pm  
 18.30 **Sw Bridge Club** Mowlem Community Room. 421840  
 19.00 **Wareham Air Cadets** meet at Air Training Corps HQ, St Martin's Lane, Wm. Cadets age 12+. Ffi: email: oc.2185@aircadets.mod.  
 19.30 **Swanage Group of Alcoholics Anonymous** meets at Swanage Day Centre, High Street, Swanage. If you want help to stop drinking, you are welcome. Or call 01202 296000 for more details.  
 19.30 **Women's Walking Football Club** at Swanage Football Club. Come and try! All levels welcome, even if you've never played before. Come and join in or just come along to watch a very friendly group of people playing football. Until 9pm. Call Nick on: 07745 907509  
 19.30 **Sw & Langton Folk Dance Club** Langton VH. Ffi: 421913  
 19.00 **Belvedere Singers** rehearsal at St Mark's CE VA Primary School, High St, Sw. Parking on-site. Till 9pm. All singers welcome! 423350.  
 19.00 **Give Rugby A Try! FREE!** at Swanage & Wareham Rugby Club, Bestwall Rd, Wm. We're looking for new players, so come and have a go! Until 9pm. Over 18s only. Call John C. on: 07970 500357 Ffi.  
 20.00 **Carey Hall, Wm Bingo**

### EVERY WEDNESDAY

- 09.00 **St Mark's Toddlers Group,** St Mark's Church, Swanage. Herston, Sw Till 11am  
 09.45 **Corfe Wool Workshop** Corfe VH, East St. Members £1.50; non-members £2.50. Till 12.00. 427067  
 10.00 **Short tennis for adults** at Swanage Football Club. All welcome. Equipment supplied. Till noon.  
 10.00 **Breast Feeding Group** at Wareham's Children Centre, Streche Rd, Wm. Offering peer support and breastfeeding counsellor advice. Till 12 noon. Ffi: 552864  
 10.30 **Adult Dance Classes.** Modern Line dance. Until 11.30am. At St Edward's Church hall, Swanage. Ffi: 01202 243803 or see: www.purbeckdancestudio.co.uk  
 10.30 **Play and Learn** at Kids of Wool (BH20 6DY) until 12 noon.  
 10.30 **Books and More** - at Swanage Library. Reading & discussion group.  
 13.00 **Studland Toddler Group** at Studland Village Hall until 2.30pm.  
 14.00 **Herston Senior Citizens** meet Herston Hall, Jubilee Rd, Sw. All welcome  
 14.00 **Health Qigong: Fitness and relaxation.** Till 3pm. With Penny at the Mowlem Community Room, Sw. Ffi 07969925502  
 14.30 **Local Historian takes you on a town walk** around Swanage, lasting 1 1/2 hours. No need to book, just turn up in the Swanage Museum in the Square, voluntary contributions welcome.  
 15.00 **Extend Exercise Class,** now at Morton Village Hall. To improve strength, balance and flexibility. All welcome. Donations welcome. Ffi: 471490.  
 16.15 **Swanage Football Club U-7s Training** til 5.15pm. £1. Ffi: 426346  
 17.15 **Swanage Football Club U-9s Training** til 6.15pm. £1. Ffi: 426346  
 18.00 **Swanage Tennis Club** at Beach Gardens, Sw. Free Cardio Tennis taster. Till 7pm  
 18.00 **Swanage Youth Club.** School years 7&8. Till 8.30pm  
 18.00 **Table Tennis** at Harmans Cross Village Hall. All ages & abilities welcome. Coaching given. Till 8pm or later. Ffi: 424591  
 18.30 **Sw & Wm Hockey Club Junior (6-14yrs)** Training, Wm Sports Centre. Until 7.30pm. Email: swanagewarehamhockey@outlook.com  
 19.00 **Wm Bridge Club** at the Library, South St. 552046  
 19.00 **Swanage Depression Support group.** We meet on the 1st and 3rd Wednesday each month at the Lower Hall, Salvation Army, Kings Rd East, Sw. BH19 1ES, until 9pm. Ffi: Nick on: 07766352062 or email: nickviney@hotmail.com or call Mary on: 01929426896.  
 19.00 **Wareham Depression Support group.** We meet on the 2nd and 4th Wednesday each month at Not Just Sundaes, South Street, Wareham. BH20, until 9pm. Ffi: John: 01929556315 or 07871 727278 or email: johnoneil905@yahoo.co.uk  
 19.00 **Swanage Town Band** meet for our weekly practice in the Council Chamber, Swanage Town Hall. New musicians warmly welcomed. Please call David Cook (musical Director) for further information on: 01929 422909.  
 19.00 **Give Rugby A Try! FREE!** at Swanage & Wareham Rugby Club, Bestwall Rd, Wm. We're looking for new players, so come and have a go! Until 9pm. Under 16s-18s only. Call John P. on: 07725 567541 Ffi.  
 19.00 **Purbeck Runners** meet at Beach Gardens Pavillion, Sw.



- 19.30 **Swanage Musical Theatre** meet Swanage Bay View Complex Rehearsal Room. All welcome. Ffi: 426161
- 19.30 **Sw & Wm Hockey Club (13+ years)** Training, Wm Sports Centre. Till 9pm. Email: swanagewarehamhockey@outlook.com
- 20.00 **Sw Youth Centre Club Night** (Yr 9+) Till 10
- 20.15 **Dorset Buttons Morris Practice.** URC Hall, Wm. 423234/421130
- 20.30 **Wm Swimming Club Adults.** All standards + stroke improvement. Till 10
- 22.00 **Sw Youth Centre Club Night** (16+) Till 11.59
- EVERY THURSDAY**
- 08.30 **Swanage Tennis Club** at Beach Gardens, Sw. Free Cardio Tennis taster. Till 9.30am.
- 09.00 **Carey Crafters** meet every Thursday at Carey Hall, Mistover Road, until 12.30pm (come anytime between). No age or gender restriction. All crafts welcome we have a wide variety!. Come along and share your craft or learn a new one! Contact Donna on 07870 993311 or Helen on 07368 352737 ffi.
- 09.00 **Swanage Painting Club.** Catholic Church Hall, Rempstone Rd, Sw. Friendly group. New members including beginners welcome. Till 1pm. Ffi: Jane on 01929 427078
- 09.30 **Play and Learn** at Chapel Lane, Swanage, till 11am.
- 09.30 **Well Baby Clinic** at Stretche Road, Wareham, until 12 noon.
- 09.30 **Swanage Tennis Club** at Beach Gardens, Sw. Free Matchplay taster session for prospective new members. First 3 sessions are free. Until 11am.
- 09.30 **Sensory Play** for under ones, at Bovington Centre until 10.30am
- 09.30 **Adult Dance Classes.** Latin American & Ballroom dance. Until 10.30am. At the Wareham Scout & Guide Hut, N. Bestwall Rd, Wareham. BH20 4HX. Ffi: 01202 243803 or see: [www.purbeckdancesudio.co.uk](http://www.purbeckdancesudio.co.uk)
- 10.00 **Wyvern Savings & Loan Credit Union** opens until 12 noon at Not Just Sundaes, South Street, Wareham, opposite the Library. A secure place to save and loans available at fair rates. Call in for a cuppa and a chat, or call 01305 268444.
- 10.00 **Wm Parent & Toddler Group** During term Parish Hall, Quay Till 11.45. 556806
- 10.00 **Wool Country Market** D'Urbeville Hall. Cakes, preserves, plants, crafts, vegetables. Coffee & biscuits available.
- 10.00 **Tea, Coffee, Biscuits** at Queensmead Hall, Sw. Till 11am. Adm 50p
- 10.00 **Volunteer Centre Drop-In** at Wareham Library till 12pm. Find out about volunteering to support community groups & charities.
- 10.00 **Wareham Croquet Club** meet at the Recreation Ground until 5pm. New members and visitors welcome. Call Tony on 01929 550190 or Lesley on 01929 553927 or email [warehamgolfcroquetclub@hotmail.com](mailto:warehamgolfcroquetclub@hotmail.com)
- 10.15 **Chess** at the Cafe Tratt, Lower High Street, Swanage (from 8th February 2018). Call in for a friendly game of chess and a chat. All welcome.
- 10.30 **Mid-Week Market Morning Service** URC, Church St, Wm. Prayer requests to Revd. Simon Franklin 556976
- 10.30 **Woodworking** with Bernard and Terry at the Purbeck Workshop in Wool. The Workshop provides craft activities free of charge to those touched by cancer - friends and family are welcome too. Unit 6, Woolbridge Business Centre, East Burton Rd, Wool. BH20 6HG. [www.purbeckworkshop.org](http://www.purbeckworkshop.org) 07757 776907. Email: [richris95@gmail.com](mailto:richris95@gmail.com)
- 11.00 **Sensory Play** for 1-4yrs old at Bovington Centre, until 12 noon.
- 13.30 **Under 1 year olds** at Wareham's Children's Centre, Stretche Rd, Wm. Anti-natal mums welcome. Till 3pm. Ffi: 552864.
- 13.00 **Wareham Area Men's Shed** meets at Purbeck Connect, Sandford Lane, Wm. Ffi: call Chris on 554758, Harold on 792591 or Mike on 288045
- 13.30 **Toddler Group.** All Saints' Church, Sw. 423937. Till 3pm (Term times)
- 14.00 **Swanage Town Walk.** Local historian takes walks lasting 90 minutes. Meet outside the Museum in the 'Square'. No charge but voluntary contributions welcome.
- 14.00 **Wareham Happy Cafe.** Friendly conversation, talks, activities and some fun to put a spring in your step! Everyone welcome. Held at the Not Just Sundaes Cafe in South Street, Wareham. BH20 4LU. From 5th March 2020 onwards. FREE. Until 3.30pm.
- 14.00 **Studland Chair-based Exercise** in the Village Hall, Studland. Ffi: Julie on 558139 or email: [jbrad@uwclub.net](mailto:jbrad@uwclub.net)
- 14.15 **Sw Over-60s** Meet in the Rectory Classroom, Swanage, Sw. All Welcome.
- 17.45 **Swanage Youth Club.** Learning Difficulties and disability (age 11-25) night. Till 7.30pm
- 18.00 **Isle of Purbeck Arts Club.** Weekly evening Art Group. Aimed at beginners, at Purbeck New Wave Gallery, 25 Commercial Rd, Sw. BH19 1DF. till 9pm.
- 18.15 **Sw Cricket Club** Practice till 9pm
- 18.30 **Swanage Sea Rowing Club Circuit Training** at Swanage Middle School. Ffi: 07776 201455
- 19.00 **Health Qigong: Fitness and relaxation.** Till 8pm. With Penny at Furzebrook VH, Wm. Ffi 07969925502
- 19.00 **Over 40s Men's Walking Football Club** at Swanage Football Club. Come and try! All levels welcome, even if you've never played before. Come and join in or just come along to watch a very friendly group of people playing football. Until 8.30pm. Call Nick on: 07745 907509
- 19.00 **Purbeck Gateway Club** meets at Wareham Youth Centre until 9pm. Purbeck Gateway is a club for adults with learning difficulties. We meet during term time and have fun! All welcome. Ffi: Lew on 552173. Email: [Lewisbell1@aol.com](mailto:Lewisbell1@aol.com)
- 19.15 **Wm Town Band Brass & Woodwind** players welcome. 551478/01202 242147
- 19.30 **Short Mat Bowls** in the Durbeville Hall, Wool. All standards welcome, till 9.30pm. Ffi: 552682
- 19.30 **Purbeck Arts Choir** meet for rehearsals, with conductor David Fawcett, at St Mary's School, Northbrook Road, Swanage. Sept-May. All welcome. For more information please phone Liz Roberts 01929 481419
- 19.30 **Swanage Youth Club Youth Action** (year 7 - sixth form). Till 9.30pm
- 20.00 **Herston Hall OAP Committee Bingo** Sw
- EVERY FRIDAY**
- 08.45 **Coffee @ 112 - Drop In For Coffee!** Catch up with friends at 112 High Street
- (United Reformed Church) in Sw. Cake and bacon butties. Fair trade stall. Donations for 'Besom in Purbeck' and church funds.
- 09.00 **Swanage Tennis Club** at Beach Gardens, Sw. Free Cardio Tennis taster. Till 10am
- 09.30 **Health Qigong: Fitness and relaxation.** Till 10.30am. With Penny at Furzebrook VH, Wm. Ffi 07969925502
- 09.30 **Wareham Area Men's Shed** meets at Purbeck Connect, Sandford Lane, Wm. Ffi: call Chris on 554758, Harold on 792591 or Mike on 288045
- 09.30 **Little Fishes Baby and Toddler Group.** Catholic Church Hall, Rempstone Road, Swanage. Term time only. Until 11.30am. Ffi: Alex on 07904 412067.
- 10.00 **Table Tennis Club** Sw FC All ages/abilities £2.50 Till noon. 480093
- 10.00 **A Place Of Welcome** at 21 Commercial Road, Sw. Friendly drop-in for everyone, providing a free cup of tea or coffee, a listening ear, conversation and basic information. Everyone welcome, whatever the circumstances.
- 10.30 **Do you want to volunteer in Swanage?** Meet the team at the Volunteer Bureau in Swanage Library! Until 12.30pm.
- 11.00 **Swanage Library Rhyme Time,** ages 0-4, until 11.30am.
- 11.00 **Toddler Time** For Under 5s And Carers. Wareham Library. Stories, songs and crafts. Every Friday, including school holidays. Ffi: 01929 556146
- 14.00 **Wareham Short Mat Bowls.** Meet at Furzebrook Village Hall. New members welcome to come along and meet us!
- 14.30 **Short Mat Bowls** at Durbeville Hall, Wool. Till 4.30pm. All standards welcome. Ffi: 552682.
- 18.00 **Swanage Tennis Club** at Beach Gardens, Sw. Free Matchplay taster session for prospective new members. First 3 sessions are free. Until 8.30pm.
- 18.00 **Purbeck War-Game & Model Club.** Royal British Legion, Sw. 426096.
- 18.00 **Sw Youth Centre Club** 12-13 (Yr 7-9) Till 8
- 18.00 **Purbeck Youth Choir** at the United Reformed Church Hall, Sw. 8-18 years old. Till 7pm. Ffi: Jay Buckle on: 07947 866945
- 18.30 **Sw Bridge Club** Mowlem Community Room. 421840
- 19.00 **Sw Youth Centre Seniors Club Night** (Yr 9+) Till 9.30pm.
- 19.30 **Short tennis** for adults at Swanage Football Club. All welcome. Equipment supplied. Till 9.30pm. £3.
- 19.45 **Alcoholics Anonymous Wareham.** Talk and tea from 19.15, meeting from 19.45 until 21.00. At Wareham Day Centre, 21 Bonnets Lane, Wareham. BH20 4HB. If you think you may have a problem with alcohol, you are welcome. You can learn about living sober from people who do. The first Friday of each month is also open to professionals and friends/family of problem drinkers. Ffi: 01202 296000.
- 20.00 **Sw Youth Centre Live Bands** (as advertised) Till 10pm.
- 22.00 **Sw Youth Centre Late Session** (Yr 9+) till 11.59pm (members free)
- EVERY SATURDAY**
- 08.00 **Purbeck Runners** meet at the Mowlem, Sw. 4/5 mile run.
- 09.00 **Sw CC U11 - U15 Practice** till 10.30
- 09.30 **Sw CC U9 & U10 Practice & Kwik Cricket** till 10.30
- 10.00 **Tea, coffee and home-made cakes** in the Parish Hall on Wareham Quay during the Community Market. Till 2pm. Bric-a-Brac stall weekly. Christian bookstall most weeks. All welcome for a warm-up and a friendly chat.
- 11.00 **Lego and Megablok Mayhem** at Swanage Library, until 12 noon.
- 20.00 **Herston OAP Committee Bingo** at Herston Hall, Sw
- EVERY SUNDAY**
- 09.00 **Purbeck Runners** meet at the Mowlem, Sw. 8+ mile run.
- 10.00 **Arts and Crafts Market** at the Mowlem in Swanage. A wide range of local art for sale, including pottery, glass, cards, fabric and much more! To book your table, or for more information, call Tony on 01929 421321.
- 10.00 **Give Rugby A Try! FREE!** at Swanage & Wareham Rugby Club, Bestwall Rd, Wm. We're looking for new players, so come and have a go! Until noon. Under 6s-16s only. Call Claire on: 07799 842225 Ffi.
- 10.30 **Stoborough Emmanuel Baptist Church** meet at Stoborough First School, Stoborough. All very welcome.
- 13.30 **Swanage Tennis Club** at Beach Gardens, Sw. Free Cardio Tennis taster. Till 2.30pm
- 14.30 **Swanage Tennis Club** at Beach Gardens, Sw. Free Matchplay taster session for prospective new members. First 3 sessions are free. Until 4.30pm.
- 19.00 **Quiz Night with cash prizes** at the Red Lion, High Street, Swanage. All welcome - come along and see if you can win the prize pot!

# TALK TO US

any time you like, in your own way,  
about whatever's getting to you

CALL: 116 123 (FREE)

EMAIL: [jo@samaritans.org](mailto:jo@samaritans.org)

WEB: [samaritans.org](http://samaritans.org)

VISIT US: find your  
nearest branch on  
our website



A registered charity



# LOCAL TRADE ADVERTISING

## LOCAL TRADERS

USE THEM OR LOSE THEM FOLKS!

## KEEP IT LOCAL

### From REPAIR TO REPLACEMENT

Windows, Doors, Conservatories, Fascias & Glazing. Garden Rooms now available.

**Purbeck**  
**Conservatories &**  
**Windows Ltd**

**FENSA**  
Registered Company

For a FREE quotation and prompt service, please call us on:  
01929 554321 or 07734 534286  
Email: purbeckcw@hotmail.co.uk

### OVEN & WASHING MACHINE REPAIRS

and other appliances

Washing Machines, Dishwashers,  
Tumble Dryers, Electric Cookers,  
Fridges, Freezers.

Colin Shailer.  
01929 554809 07711 165062  
colinshailer@gmail.com



CMS Electrical Repairs

### DIRTY OVEN!

**Clean Ovens Domestic Ltd**  
**DOMESTIC OVEN CLEANING**

NON caustic, fresh solution every time.  
Hobs, Extractors and Microwaves  
Covering the Whole of Dorset

**PHONE 0800 707 6629**

### SOOTY THE SWEEP

Local Full Time Chimney Sweep for 30 years  
Nacs, Hetas, City & Guilds Qualified

Be safe! Reliable Advice Given

Covering All of Dorset

All chimneys and flues swept  
Woodburner Servicing  
Cows, bird nets, pots, etc.  
Stoves, liners, grates, fire tools  
Kiln dried LOGS, CCTV Surveys  
Insured and certificates given.



**01929 554700/427427**

**www.sootythesweep.com**

### KDL PLUMBING & HEATING

Immersion heaters, cylinders, cold water tanks,  
ballvalves, taps, showers, bathrooms, radiators,  
heating problems and more!

FREE ESTIMATES & ADVICE - NO CALL OUT CHARGES

Mobile: 0747-512-8249 or 01929 448548

ALL AREAS SERVED

### MALLWOOD ROOFING LTD

Family business - all aspects of roofing, including:

Built-up Felt, Cold Applied Liquid System  
Slatting & Tiling

All new roof coverings fully guaranteed

TEL: 01202 020063

or 07950 972289

Checkatrade.com

### Roy Osmond Ltd Traditional Forge Works

Light Fabrication, Security Grills, Hand & Balcony  
Rails, Fire Escapes & Bespoke Work  
Stainless Steel and Glass Balconys

Telephone on: 01929 400520  
or mobile: 0779 6044859

### Bug Busters Pest Control

Professional Reliable Service

Wasps, Mice, Rats, Ants, Flies, Fleas,  
All dealt with promptly & efficiently.

All Dorset areas covered Tel: 01929 460011  
www.bugbustersdorset.com Mob: 07973 407027

### Buds of Mave

Wedding Flowers & Funeral Tributes  
Bouquets Made To Order  
Contact Caroline for further details  
07966462974

### Great Escape Gardens

General Maintenance Specialist  
Preparation & Planting

TREE PRUNING & FELLING, PATIOS & DECKING  
FENCES & GATES

01929 781680, 07767 028248

www.greatescapegardens.co.uk

### Garage Doors

New Installations

Repairs

Servicing

Automation



Dorset Doors Ltd - Wareham

**01929 660789**

### IDEAL SKIP HIRE

Skips from 2 - 40yds

SAND GRAVEL HARDWARE  
SHINGLE & TOP SOIL

Available loose or in 25kg & 1 ton bags  
Delivery or Collection

Trade & DIY customers welcome  
A Fast, Friendly & Efficient Service

**TEL: 01929 422980**

### SWANAGE & DORSET

SCAFFOLDING & ROOFING

All aspects of Residential & Commercial Scaffolding  
Flat Roofing - Re-roofs, Slate or Tile, All repair works

Emergency Call Outs - Free Quotations & Estimates

Temporary Roof Coverings - Fully Insured

**OUR PRICE WON'T BE BEATEN**

**01929 424553 01258 858214**  
**07813 346993**

**Quality Sweep**

- Power or manual sweep & HEPA filtered vacuum
- CCTV inspection
- Bird nest removal
- Certificate issued with every sweep

Tel: 01305 852134 Mobile: 07941 350127

**SWEEPS FROM £40**

**3D**

Detect - Deter - Dependable  
**Fire Alarms**  
**Intruder Alarms**  
**CCTV**  
**Installation & Maintenance**

Security Systems Ltd

Call:

**07946 775549**

Email: info@3dsecuritysystems.co.uk



# LOCAL TRADE ADVERTISING

## SANDIE'S BARBERSHOP

191 HIGH STREET, SWANAGE

Open Mon - Thurs, 9am - 5pm,  
Fri 9am - 2pm, Sat 8.30am - 3pm

We are closed on Sunday.  
Late night Thursday till 7pm

**01929 426364**

## LOCKSMITH

Police recommended insurance approved locks available  
Additional Security for Garage & Gates, Key safes, Codelocks  
UPVC multipoint & Wooden door lock specialist  
Local Master locksmith & Safe Engineer Service

**07709 545701**

[www.parrotlocks.co.uk](http://www.parrotlocks.co.uk)  
paul@parrotlocks.co.uk



## DOORS, WINDOWS & LOCKS

GLASS REPAIRS: MISTED, DAMAGED DOUBLE  
GLAZED UNITS REPLACED.

PVC-U & TIMBER WINDOWS & DOORS  
INSTALLED. INTERIOR DOORS FITTED.

PVC-U DOOR PANELS REPLACED.

CAT FLAPS FITTED.

LOCKS OPENED, REPLACED, UPGRADED.

SNAPPED KEYS EXTRACTED.

HANDLES - HINGES - LETTER BOXES - SEALS

GASKETS REPLACED

SECONDARY GLAZING SUPPLIED  
AND INSTALLED

**TEL: 01929 481496**

**MOBILE: 07484 186617**

**EMAIL: dwlocks@outlook.com**

FENSA, MTC-CRB CHECKED. GGF1 INSURANCE-BACKED GUARANTEE



## ROOFING SPECIALIST SPARROW'S

**Over 30 years**  
Membership Federation of Master Builders

**NO JOB TOO SMALL**

**01929 421156**

**07974 077885**

*The Premier Trade Organisation*

*High Performance Flat Roofing Specialists*

*Re-Roofing - Slating & Tiling*

*Roof Repairs - UPVC Facias & Gutters*

*Chimneys Removed or Repointed*

*sparrowroof@gmail.com*

## A.D.S PROPERTY SERVICES

### General Builder

**EXTENSIONS,  
KITCHENS & BATHROOMS,  
BRICKWORK,  
PATIOS, FENCING,  
PLASTERING,  
DECORATING,  
ROOF REPAIRS  
& CHIMNEYS**

Tel: Andy Smith 01929 553535 **City& Guilds**  
Mobile: 07743 440906

## Purbeck Chimney Sweep

TEL: 01929 423244  
MOB: 07974 809779

**ICS Always happy to help and advise**

## TERMINATOR PEST CONTROL

**WASPS • BEES • FLEAS • RATS  
MICE • ANTS • SQUIRRELS • BIRDS**

All Purbeck areas covered

**01929 554898**

MOBILE: 07831 351877



## J.A. CONSTRUCTION

(DORSET) LTD.

Specialist in Purbeck Stone Walling  
General Building, Extensions,  
Renovations, Roofing, New Builds  
and all types of Ground Work.

Also available for Plumbing,  
Electrics & Carpentry.



Tel: 01929 554249

Fax: 01929 552294

Mobile: 07973 388190

[www.jaconstructiondorset.co.uk](http://www.jaconstructiondorset.co.uk)

Email: sales@jaconstruction.co.uk

## DIGITAL AERIAL UPGRADES

\*SKY & FREESAT INSTALLATIONS

\*LCD/PLASMA SALES & REPAIRS

\*WALL MOUNTING & INSTALLATION SERVICE

For simply a better service contact

**REPAIRLINE**

7 WEST STREET WAREHAM

Members of **Checkatrade.com** **01929 554692**  
Where reputation matters



## BINDON ABBEY SCAFFOLDING

**WOOL - WAREHAM**

*Reliable service and competitive pricing*

**T: 07501 465192**

Email: bindonabbeyscaffolding@outlook.com

## Countryside Tree Surgeons

Professional specialists - NPTC certified tree surgeons

All aspects of Tree Surgery, Hedge Trimming & Fencing

**FREE QUOTATION**

Established 18 years. Fully Insured. Family-run business

Please call Wayne Pitman

**0800 389 3992 (office)**

**01929 551816 (home)**

**07979 447777 (mobile)**

## BRIAN MOORE

**INDEPENDENT TELECOM ENGINEER**  
(Ex-BT)

**Repair of phone lines & broadband**

**HALF BT PRICES!!**

**07858 458997 - 01929 554886**



It's really rather simple you know.

If you are looking at this space,  
then so are your potential customers.

Book your trade ad now, there's a  
good chap.

Please call **01929 424239**. Quite.

## Whizzbits

Computer Sales & Support

Virus/Spyware removal • Upgrades & repair  
Networking • Windows problems fixed  
Wireless set-up • Internet & e-mail

**Tel: 01929 421989 or 07900 992110**

Call Pete for a prompt & reliable service



**Colin Mowbray**

**Gas Installer**

**Plumbing, Heating & Tiling**

**01929 550160 / 07790 056396**



Central Heating, Plumbing, Boiler Servicing  
Bathrooms & Showers, Unvented Systems

## PROPOINT

Call for a realistic quote **01929 421663**

**07768 660833**

**Re-pointing roofing**

**Wall tie replacement**

**Cavity cleaning**

**Tray & lintel replacements**

**facias & Guttering**



# LOCAL TRADE ADVERTISING



Swanage based  
Window &  
Door Company  
**FENSA**

## Installers of

Windows - Doors - Bi-fold Doors - Conservatories  
Fascias - Soffits - Guttering - Cladding  
Window & Door Repairs  
Misted Sealed Units replaced  
UPVC - Aluminium - Timber  
Ggfi Insurance back guarantee • 10 years guarantee

For a free, no obligation quote contact us on:  
Office 01929 424199 Mobile 07538 950 230  
Email - redhillwindowsltd@hotmail.co.uk  
Web - www.redhillwindowsltd.co.uk  
20 years experience working in Purbeck

## Michael B. Alberry DECORATOR

Property Decoration & Renovation

**07796 640538**  
**01929 424882**

## Buds of Mare

Wedding Flowers & Funeral Tributes  
Bouquets Made To Order  
Contact Caroline for further details  
07966462974



## Bathrooms

Ensuites - Wetrooms - Cloakrooms  
Mobility - Bath out shower in

## Design & Installation Service

- Large modern showroom with inspirational displays
- No job too small
- Free site survey and quotations

Unit 9, Justin Business Park,  
Sandford Lane, Wareham BH20 4DY  
01929 551963 www.roomh2o.co.uk



**Ian Michie**  
**TREE CARE**

Professional & skilled arborists  
**Tel: 01929 554281**  
Mobile : 07837024558

[www.ianmichietreecare.com](http://www.ianmichietreecare.com)

## Purbeck Aerials.Com

Same day service Free Sat SKY  
TV Aerials WI-FI Wall Mounting  
30 years trading experience

We offer same day service and an OAP discount

**Online Shop** **01929 553705**  
**07976 222887**

## FENCING

All Types Supplied & Erected  
**FREE ESTIMATES**

JL Corbin Fencing Contractors  
**01929 552 061 07774 207 924**



## LYTCHETT MINSTER JOINERY LTD

Manufacturers of Purpose-made  
**HARD & SOFTWOOD JOINERY**

**01202 622441** E: [info@lytchettminsterjoinery.co.uk](mailto:info@lytchettminsterjoinery.co.uk)  
[www.lytchettminsterjoinery.co.uk](http://www.lytchettminsterjoinery.co.uk)

## SAM FOOKS

General building and Garden maintenance  
Including: Pointing, Patios,  
Garden Walls and Fencing

Tel: 07772 794056 / 01929 421250  
Email: [samfooks1988@icloud.com](mailto:samfooks1988@icloud.com)

*Join our trusted Trade advertising  
section and let locals know what  
services YOU offer!*

**Six month block (single trade  
advert) £158.76 (inc. VAT)**

**USE OUR LOCAL TRADES  
PEOPLE OR LOSE THEM!**



## Purbeck Domestic & Trade Waste



Fully Insured - Registered Waste Carrier

Domestic Clearances - Commercial Clearances

Garden Clearance

Waste Electrical & Electronic Disposal

White Goods - Old Furniture & beds - Light Demolition

Evening & weekend collections available by appointment

**Telephone: 01929 550 615**

**Mobile: 07816 456 814**

[www.purbeckdomestictradewaste.co.uk](http://www.purbeckdomestictradewaste.co.uk)



## AMAZING PRINT

AT MINIMAL ENVIRONMENTAL COST

GIVE YOUR BUSINESS THE BOOST IT DESERVES

Superb quality, cost effective  
eye-catching design and print

**Get the word out and watch  
your sales soar!**

- Leaflets • Company brochures
- Publicity material
- Full design service

blackmore

superb print - naturally

**01747 853034**

[sales@blackmore.co.uk](mailto:sales@blackmore.co.uk)

Longmead, Shaftesbury, Dorset, SP7 8PX

[www.blackmore.co.uk](http://www.blackmore.co.uk)

## Man & Van

available to hire

**Rubbish Clearance**

**Half the price of a skip -  
and we do all the work!**

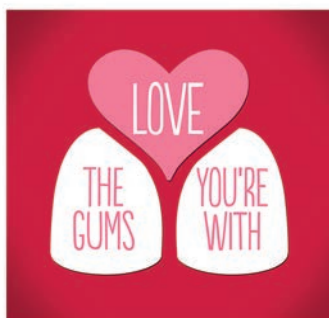
**07767 479438**

**Fully licensed & insured**

Our teeth need healthy Gums  
to survive a Lifetime

Diseased Gums seriously affect our  
General Body Health, as well

**CHECK OUT YOUR GUM HEALTH SOON**



**FREE 30 minute Specialist Periodontics  
Consultation offered - if you mention  
this advert!**

deWaal Specialist Periodontics  
MouthPeace Dental in WOOL, Dorset.

Tel: 01929 462269.

Email: [Wool@MouthPeace.com](mailto:Wool@MouthPeace.com)

[www.Specialist-Periodontics.com](http://www.Specialist-Periodontics.com)



## Swanage TV

'Always something special  
on Swanage TV'

Hyper-local News & Events

Watch LIVE every other Friday  
from 6pm on Facebook  
and YouTube

Get involved! Email: [hello@swanage.tv](mailto:hello@swanage.tv)